



US007738439B2

(12) **United States Patent**  
**Wong et al.**

(10) **Patent No.:** **US 7,738,439 B2**  
(45) **Date of Patent:** **Jun. 15, 2010**

(54) **COMMUNICATION SYSTEM WITH  
REQUEST RESERVATION TIMESLOT  
MANAGEMENT**

3,851,104 A 11/1974 Willard  
4,224,150 A 9/1980 Buriks et al. .... 210/735  
4,251,865 A 2/1981 Moore  
4,340,961 A 7/1982 Capel  
4,345,491 A 8/1982 Hannon ..... 74/831

(75) Inventors: **Gabriel K. Wong**, Honolulu, HI (US);  
**Po S. Tsui**, Honolulu, HI (US)

(73) Assignee: **GPNE Corp.**, Honolulu, HI (US)

(\* ) Notice: Subject to any disclaimer, the term of this  
patent is extended or adjusted under 35  
U.S.C. 154(b) by 271 days.

(Continued)

FOREIGN PATENT DOCUMENTS

EP 0 344 624 A2 6/1989

(21) Appl. No.: **11/449,187**

(22) Filed: **Jun. 8, 2006**

(Continued)

(65) **Prior Publication Data**

US 2006/0229081 A1 Oct. 12, 2006

OTHER PUBLICATIONS

Bertsekas, Dimitri, and Gallagher, Robert, Data Networks, pp. 312-317 (Prentice-Hall, Inc., Upper Saddle River, New Jersey 07458, 2<sup>nd</sup> ed. 1992).

**Related U.S. Application Data**

(Continued)

(60) Continuation of application No. 11/350,616, filed on Feb. 8, 2006, now Pat. No. 7,200,406, which is a continuation of application No. 09/847,005, filed on May 2, 2001, now Pat. No. 7,031,716, which is a continuation of application No. 09/594,662, filed on Jun. 15, 2000, now Pat. No. 6,282,406, which is a continuation of application No. 09/259,417, filed on Dec. 9, 1997, now Pat. No. 6,108,520, which is a continuation of application No. 08/608,629, filed on Feb. 29, 1996, now Pat. No. 5,729,827, and a division of application No. 08/264,973, filed on Jun. 24, 1994, now Pat. No. 5,542,115.

*Primary Examiner*—Yuwen Pan  
(74) *Attorney, Agent, or Firm*—Fliesler Meyer LLP

(51) **Int. Cl.**  
**H04B 7/212** (2006.01)

(52) **U.S. Cl.** ..... **370/347**

(58) **Field of Classification Search** ..... **370/347**  
See application file for complete search history.

(57) **ABSTRACT**

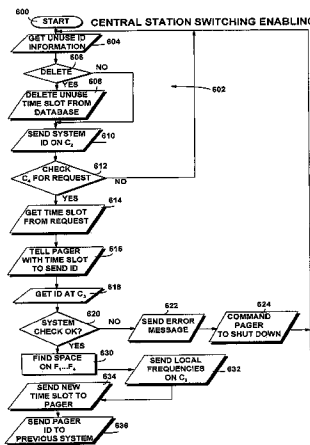
A communication system is provided for communication between network nodes and a communication controller that provides for request timeslot management. In the network, when an individual node has data to transmit, the node transmits a request signal to the communication controller over an assigned timeslot. The timeslots are assigned to individual ones of the nodes, and the timeslots assigned recur in a repeating fashion. If a timeslot is unused for a predetermined period of time, such as when a node is turned off or simply has no data to transmit, the timeslot is either eliminated or reassigned. Eliminated timeslots reduce unnecessary time delay before request timeslots recur.

(56) **References Cited**

U.S. PATENT DOCUMENTS

3,755,782 A 8/1973 Haas

**40 Claims, 13 Drawing Sheets**



U.S. PATENT DOCUMENTS

4,466,001 A 8/1984 Moore  
 4,477,809 A 10/1984 Bose  
 4,553,263 A 11/1985 Smith  
 4,555,594 A 11/1985 Friedes  
 4,603,418 A 7/1986 Townsend  
 4,644,347 A 2/1987 Lucas et al. .... 340/825.04  
 4,644,351 A 2/1987 Zabarsky et al. .... 340/825.44  
 RE32,365 E 3/1987 Sebestyen  
 4,713,808 A 12/1987 Gaskill et al. .... 370/94  
 4,736,371 A 4/1988 Tejima  
 4,742,512 A 5/1988 Akashi  
 4,747,122 A 5/1988 Bhagat et al. .... 379/57  
 4,797,947 A \* 1/1989 Labedz ..... 455/525  
 4,815,073 A 3/1989 Grauel  
 4,823,123 A 4/1989 Siwiak ..... 340/825.44  
 4,845,491 A 7/1989 Fascenda et al. .... 340/825.44  
 4,870,402 A 9/1989 DeLuca et al. .... 340/825.44  
 4,875,038 A 10/1989 Siwiak et al. .... 340/825.44  
 4,882,579 A 11/1989 Siwiak ..... 340/825.44  
 4,914,649 A 4/1990 Schwendeman et al. .... 370/50  
 4,940,963 A 7/1990 Gutman et al. .... 340/313  
 4,940,974 A 7/1990 Sojka  
 RE33,417 E 10/1990 Bhagat et al.  
 4,978,944 A 12/1990 Andros et al. .... 340/825.44  
 5,012,469 A 4/1991 Sardana ..... 370/95.3  
 5,029,164 A 7/1991 Goldstein  
 5,043,721 A 8/1991 May ..... 340/825.44  
 5,086,501 A 2/1992 DeLuca et al. .... 395/550  
 5,088,094 A 2/1992 Gravel  
 5,103,445 A 4/1992 Ostlund  
 5,109,400 A 4/1992 Patsiokas et al. .... 379/57  
 5,111,197 A 5/1992 Ichikawa ..... 340/825.44  
 5,117,449 A 5/1992 Metroka et al. .... 379/58  
 5,142,279 A 8/1992 Jasinski et al. .... 340/825.44  
 5,153,580 A 10/1992 Pollack ..... 340/825.25  
 5,166,929 A 11/1992 Lo  
 5,170,487 A 12/1992 Peek ..... 455/45  
 5,197,125 A 3/1993 Engel et al. .... 395/200  
 5,206,855 A 4/1993 Schwendeman et al. .... 370/50  
 5,224,150 A 6/1993 Neustein ..... 379/57  
 5,247,700 A 9/1993 Wohl et al. .... 455/33.1  
 5,247,702 A 9/1993 Su  
 5,260,986 A 11/1993 Pershan ..... 379/57  
 5,261,118 A 11/1993 Vanderspool, II et al. .. 455/51.2  
 5,267,244 A 11/1993 Messerschmitt  
 5,276,682 A 1/1994 Van As  
 5,276,703 A 1/1994 Budin et al. .... 375/1  
 5,278,833 A 1/1994 Crisler et al. .... 370/95.1  
 5,285,496 A 2/1994 Frank et al. .... 380/9  
 5,297,144 A 3/1994 Gilbert et al. .... 370/95.2  
 5,315,586 A 5/1994 Charvillat  
 5,353,285 A 10/1994 Van Der Plas  
 5,363,427 A 11/1994 Ekstrom  
 5,384,777 A 1/1995 Ahmadi  
 5,396,496 A 3/1995 Ito et al. .... 370/50  
 5,396,537 A 3/1995 Schwendenman et al. .... 379/57  
 5,420,864 A 5/1995 Dahlin  
 5,420,909 A 5/1995 Ng  
 5,440,555 A 8/1995 Momona  
 5,461,627 A 10/1995 Rypinski  
 5,463,675 A 10/1995 Gerszberg ..... 379/60  
 5,471,474 A 11/1995 Grobicka  
 5,485,463 A 1/1996 Godoroja ..... 370/95.1

5,491,469 A 2/1996 Schwendeman ..... 340/825.04  
 5,499,243 A 3/1996 Hall  
 5,502,721 A 3/1996 Pohjakallio  
 5,521,925 A 5/1996 Merakos et al. .... 370/95.3  
 5,542,115 A 7/1996 Wong et al. .... 455/53.1  
 5,559,804 A 9/1996 Amada  
 5,613,207 A 3/1997 Wilson  
 5,613,212 A 3/1997 Wong  
 5,677,909 A 10/1997 Heide  
 5,680,398 A 10/1997 Robinson ..... 370/458  
 5,689,807 A 11/1997 Wong  
 5,729,827 A 3/1998 Wong  
 6,108,520 A 8/2000 Wong et al. .... 455/31.3  
 6,243,071 B1 6/2001 Shwarts  
 6,282,406 B1 8/2001 Wong et al. .... 455/31.3  
 6,481,634 B1 11/2002 Zosimadis  
 7,031,716 B2 4/2006 Wong  
 7,200,406 B2 4/2007 Wong et al.  
 7,209,748 B2 4/2007 Wong et al.  
 7,212,825 B2 5/2007 Wong et al.

FOREIGN PATENT DOCUMENTS

EP 0 344 624 A3 6/1989  
 WO WO 92/09148 5/1992  
 WO WO 92/17956 10/1992

OTHER PUBLICATIONS

Defendant Samsung Telecommunications America, LLC's Invalidation Contentions filed Oct. 8, 2007 in the United States District Court for the Eastern District of Texas Court Case No. 6:07-cv-59.  
 Draft Recommendation GSM 04.08—"Mobile Radio Interface Layer 3 Specification," Version 1.0.0, Nov. 1987.  
 Draft Recommendation GSM 05.02—"European digital cellular telecommunications system (phase 1); Multiplexing and Multiple Access on the Radio Path," European Telecommunications Standards Institute, Feb. 1992.  
 Recommendation GSM 04.07—"Mobile Radio Interface Signalling Layer 3—General Aspects," v.3.3.2, Jan. 1990.  
 GSM 04.07 Version 3.3.3—"Mobile Radio Interface Signalling Layer 3—General Aspects," Technical Specification, European Telecommunications Standards Institute, Feb. 1992.  
 Recommendation GSM 04.08, v.3.13.0, "European digital cellular telecommunications system (phase 1); Mobile radio interface layer 3 specification," Interim European Telecommunication Standard—2<sup>nd</sup> Final Draft, pr I-ETS 300 022, Feb. 1992.  
 Draft Status Report—Draft Recommendation GSM 04.08 v.1.0.0, Dec. 7-10, 1987.  
 GSM doc (87) 143—"Status Report of WP3," Dec. 10, 1987, pp. 1-6.  
 Exhibit A—Samsung Telecommunications America's First Supplemental Invalidation Contentions—Claim Chart—Mobitex Interface Specification (Mobitex) Against the Asserted Claim of the '406 Patent.  
 Exhibit B—Samsung Telecommunications America's First Supplemental Invalidation Contentions—Claim Chart—U.S. Patent No. 5,103,445 (Ostlund) Against the Asserted Claim of the '406 Patent.  
 Kong, I., Lindsey, L., "CableNet: A Local Area Network Reservation System," 24<sup>th</sup> IEEE Computer Society International Conference, Feb. 22-25, 1982, pp. 182-186.  
 Mouly, Michel, et al., The GSM System for Mobile Communications, Cell & Sys., 1992, pp. 46-47, 66-67, 90-91, 94-97, 192-193, 196-197, 320-323, 354-355, 366-369, 372-379, 384-385, 388-391, 424-427.

\* cited by examiner

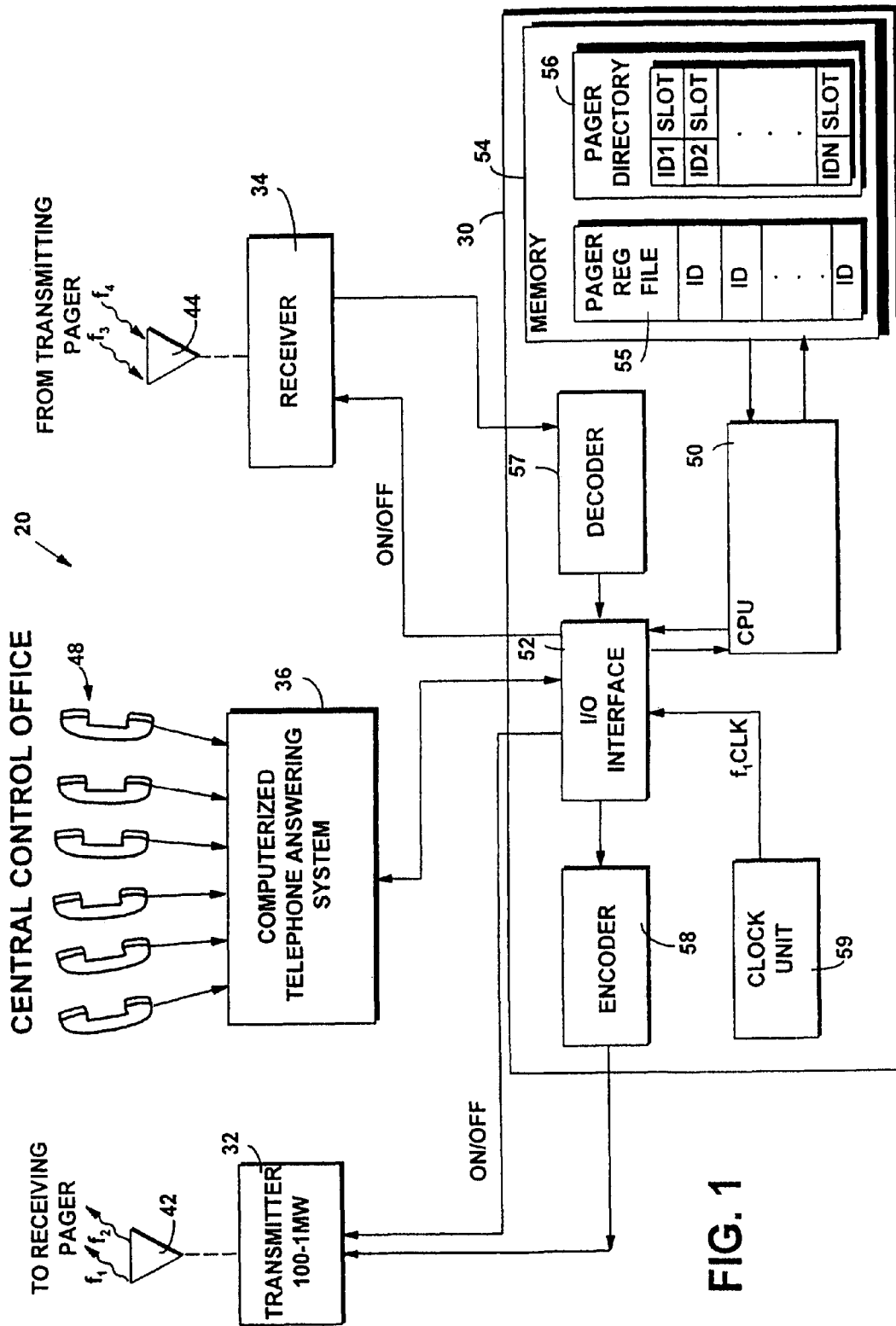


FIG. 1

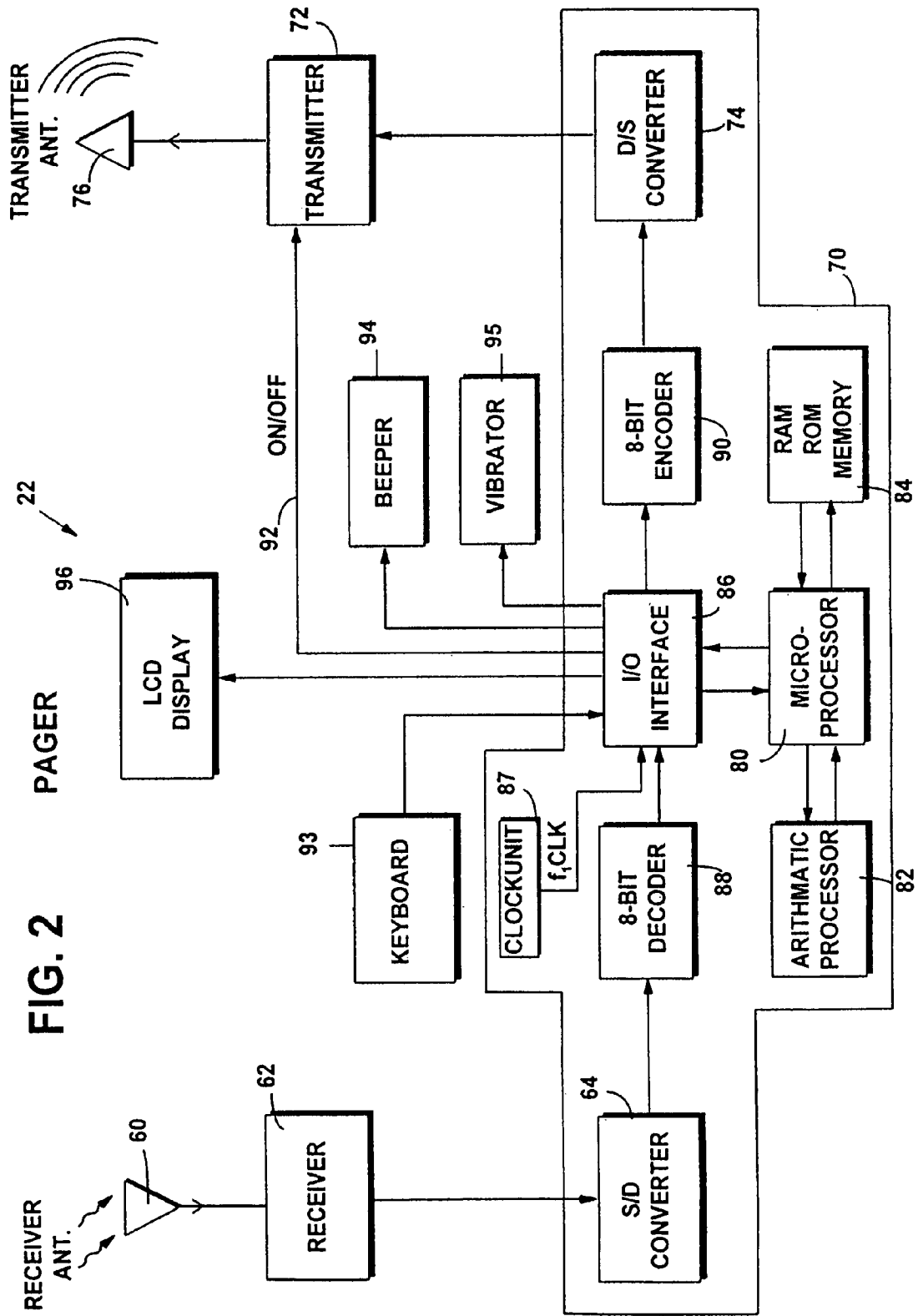
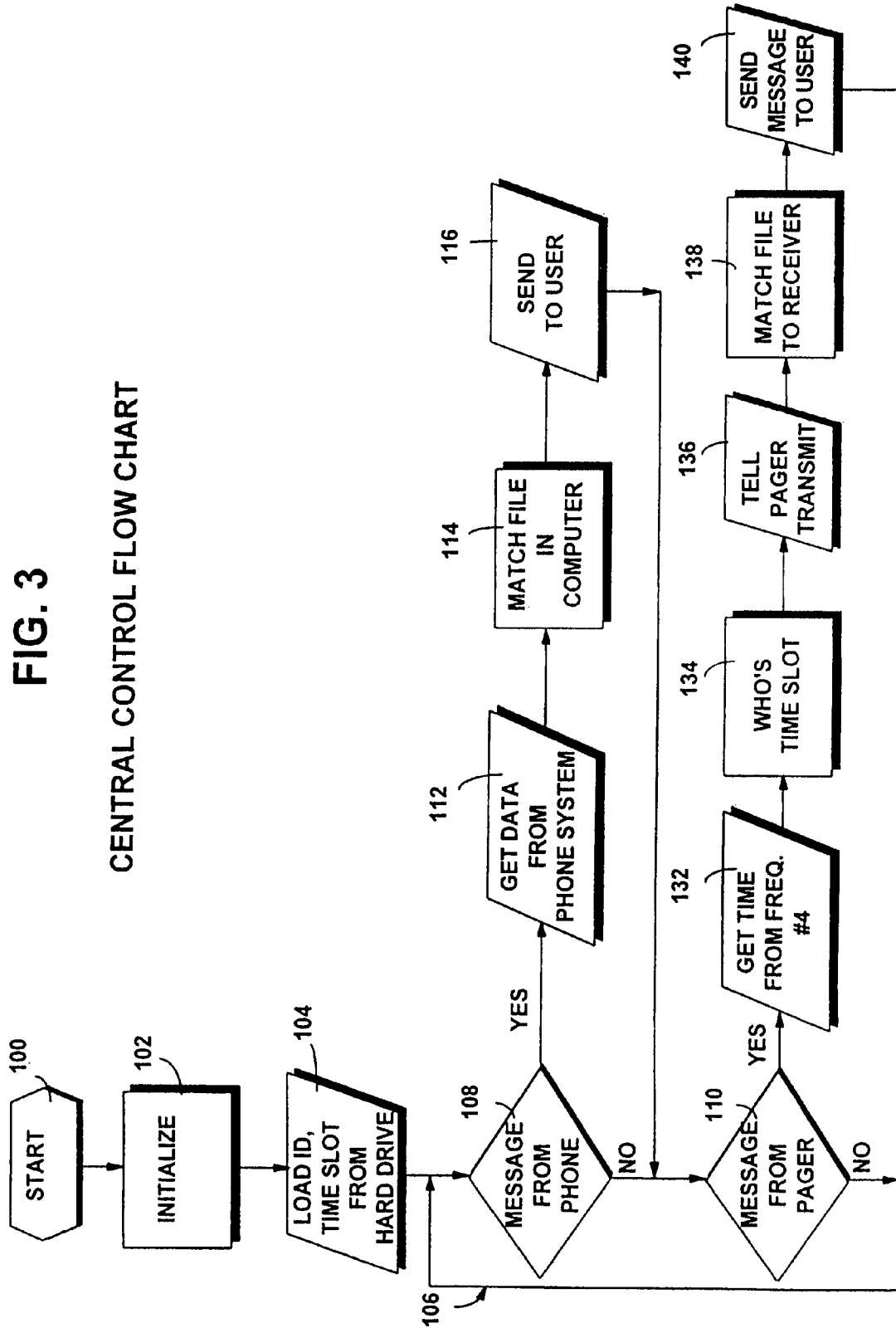


FIG. 2

FIG. 3  
CENTRAL CONTROL FLOW CHART



PAGER TRANSMITTER PROGRAM FLOW CHART

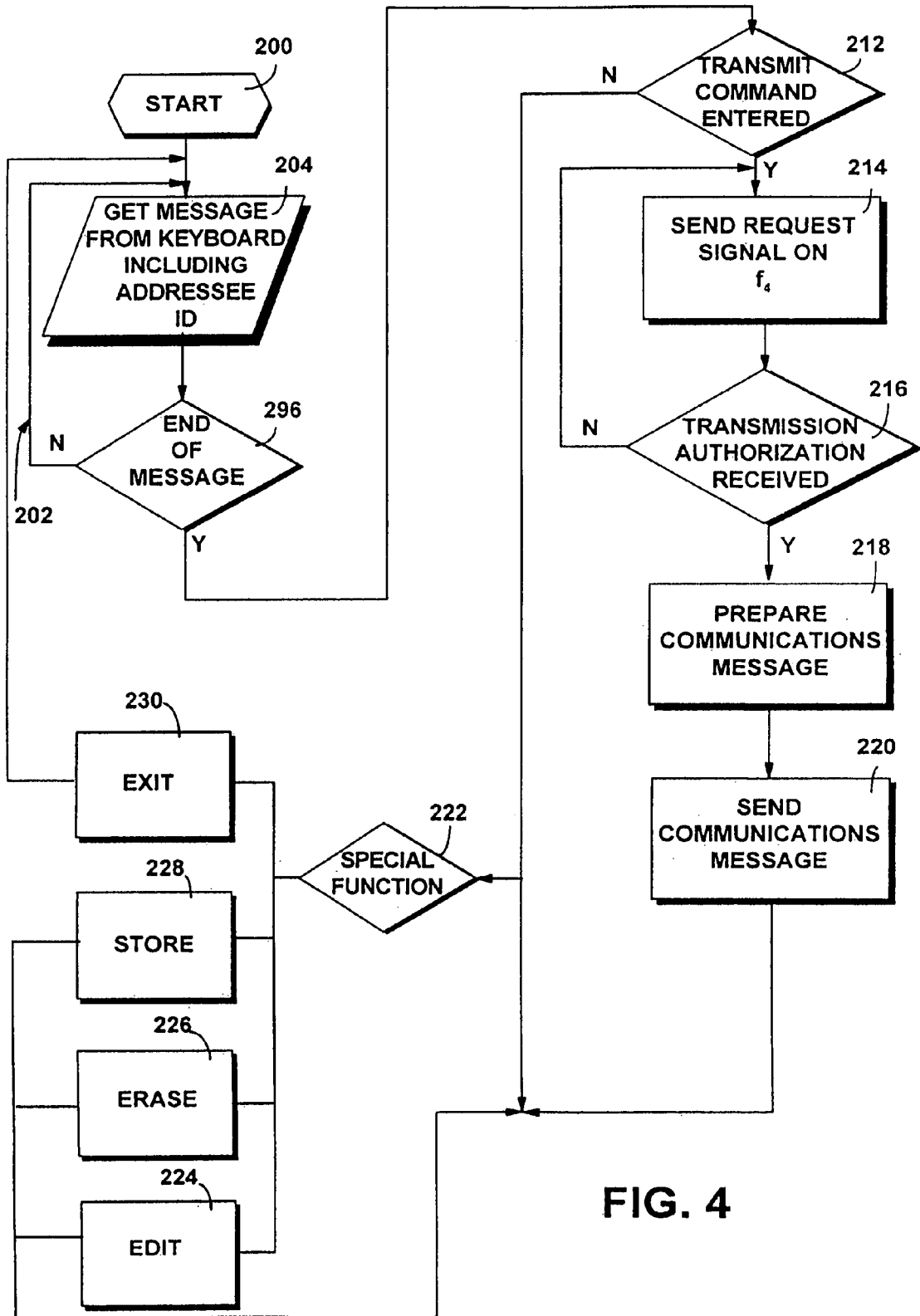


FIG. 4

FIG. 5

PAGER RECEIVER PROGRAM FLOW CHART

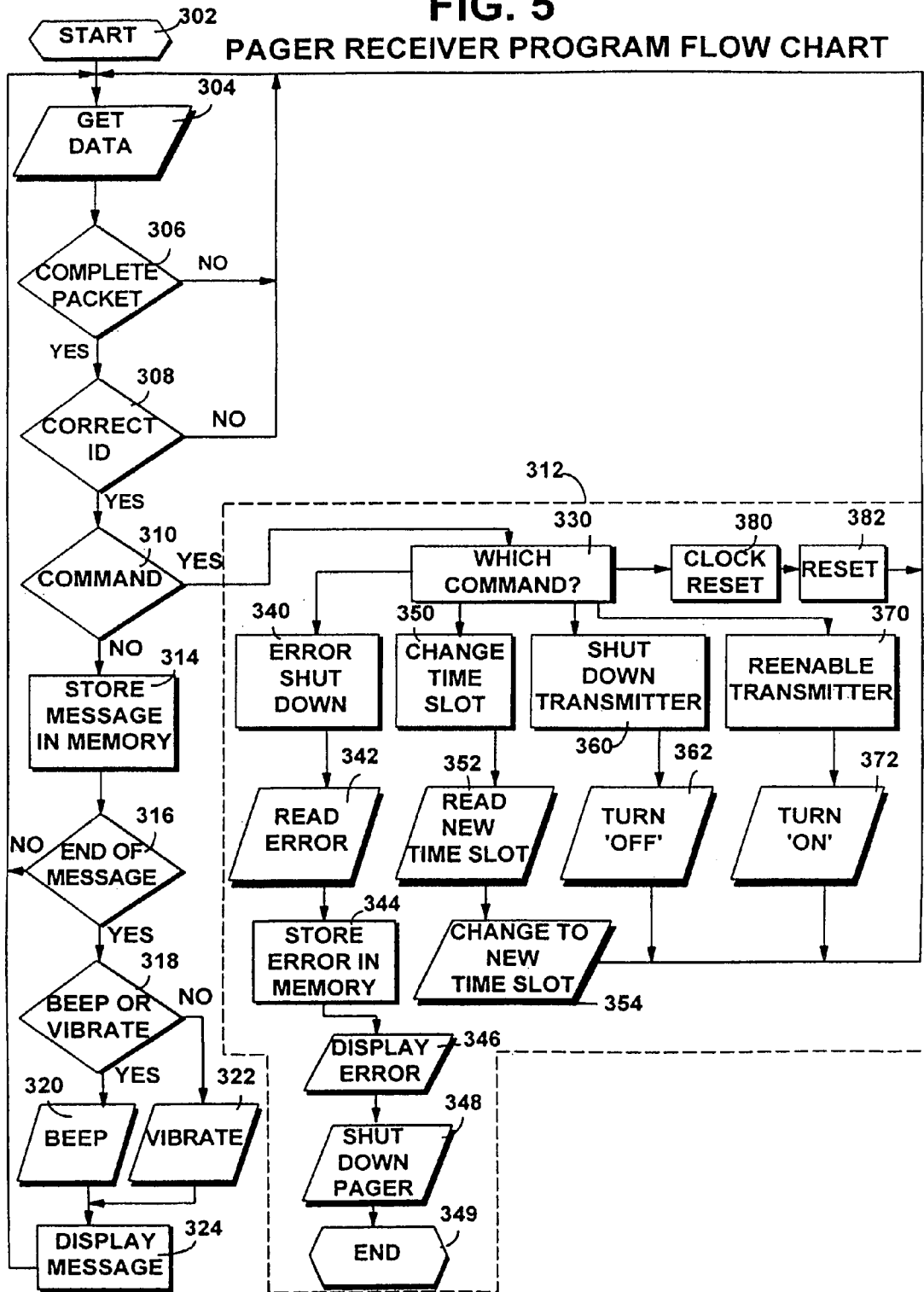
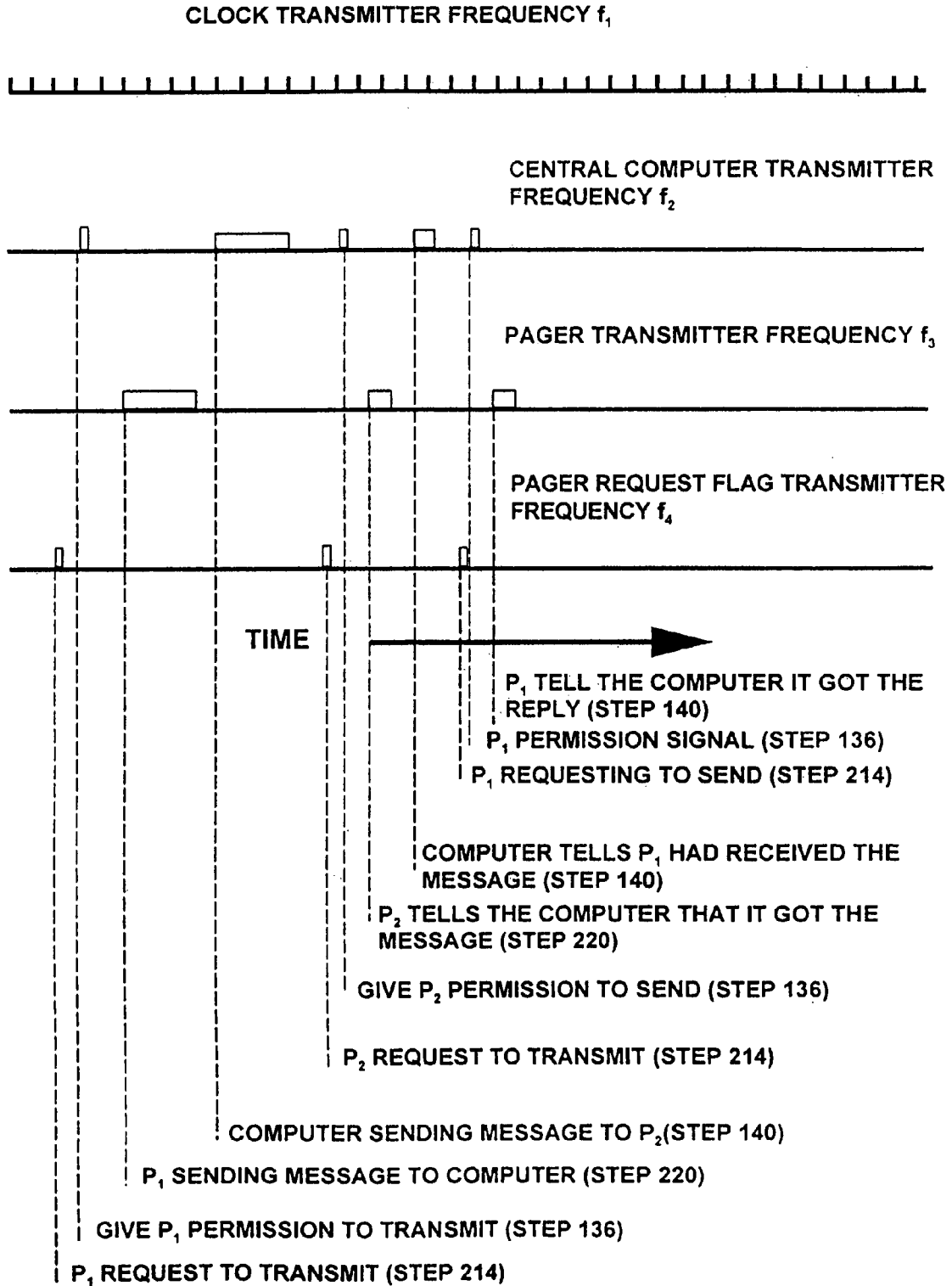
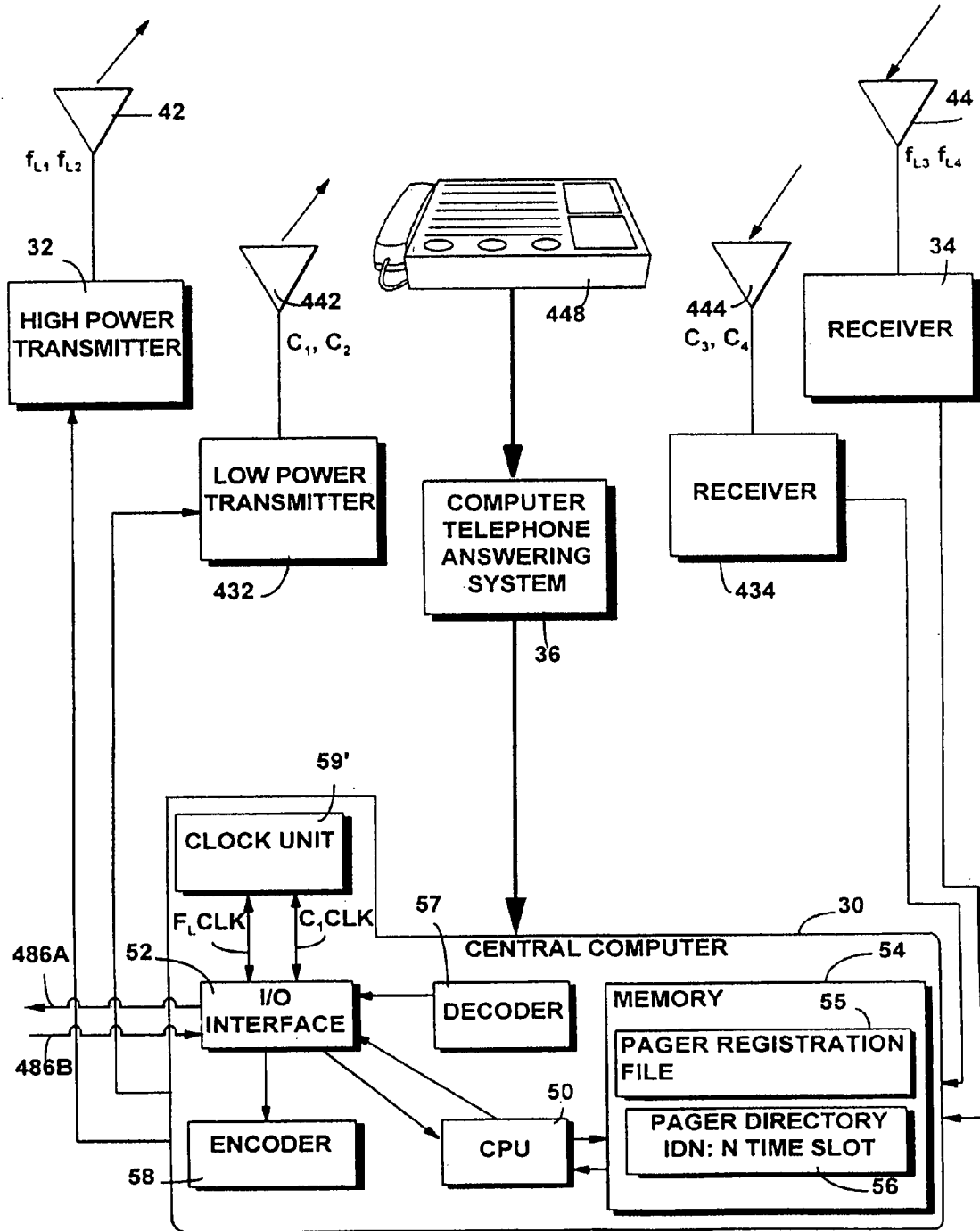


FIG. 6





**FIG. 7**  
**CENTRAL OFFICE LAYOUT**



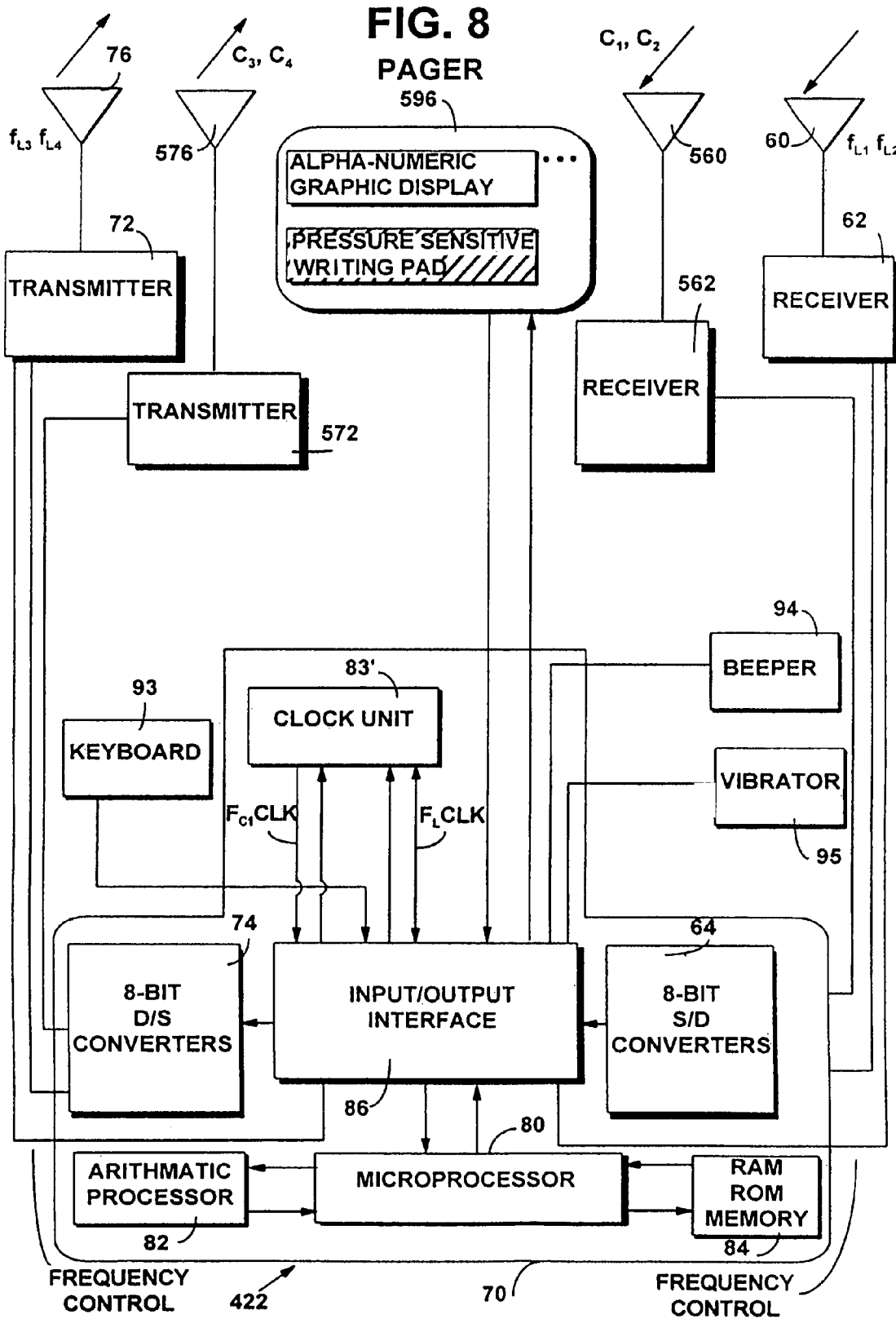
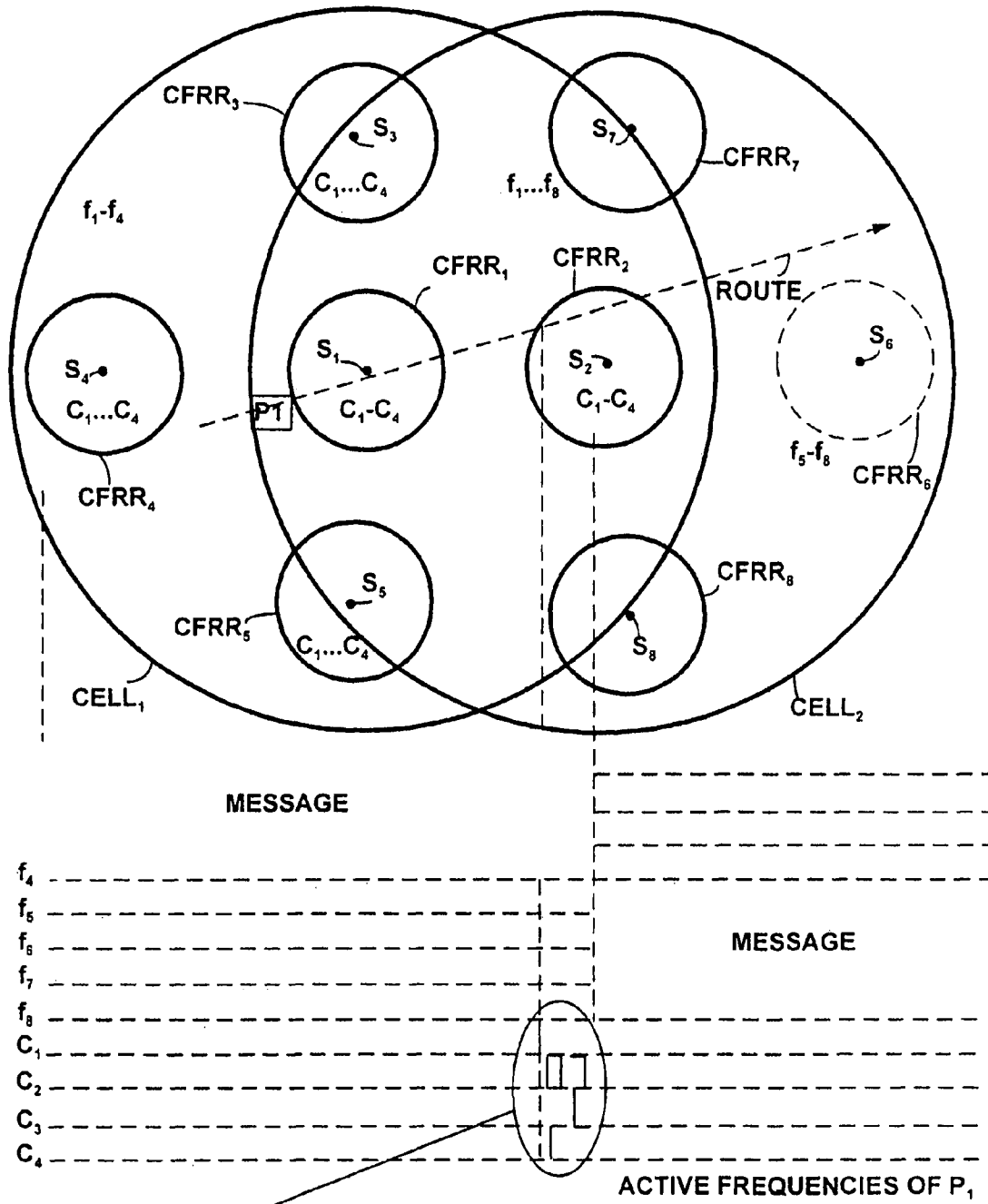


FIG. 9



**P<sub>1</sub> ALIGN ITS CLOCK WITH S<sub>2</sub> FROM C<sub>1</sub> (STEP 504)**  
**P<sub>1</sub> DETECTED NEW SYSTEM INFORMATION ON C<sub>2</sub> (STEP 508)**  
**P<sub>1</sub> REQUESTING NEW FREQUENCIES (STEP 510)**  
**S<sub>2</sub> TELLS PAGER TO IDENTIFY ITSELF (STEP 616)**  
**P<sub>1</sub> SENDS ITS ID INFORMATION ON C<sub>3</sub> (STEP 516)**  
**NEW TIME SLOT AND NEW FREQUENCIES**  
**INFORMATION GIVEN ON C<sub>2</sub>, FROM S<sub>2</sub> (STEPS 632 AND 634)**

### PAGER CHANNEL SWITCHING FLOW CHART

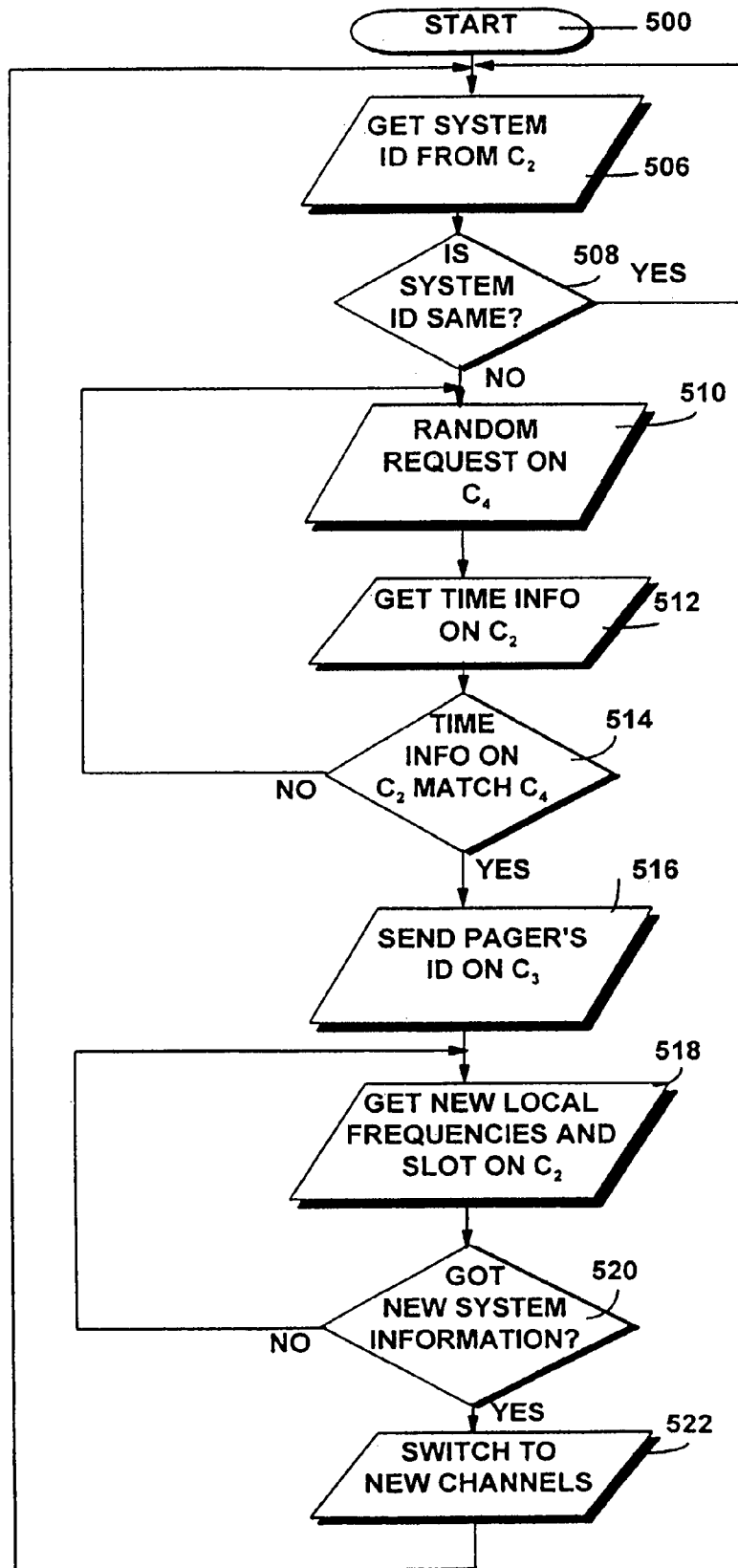


FIG. 10

FIG. 11

CENTRAL STATION SWITCHING ENABLING

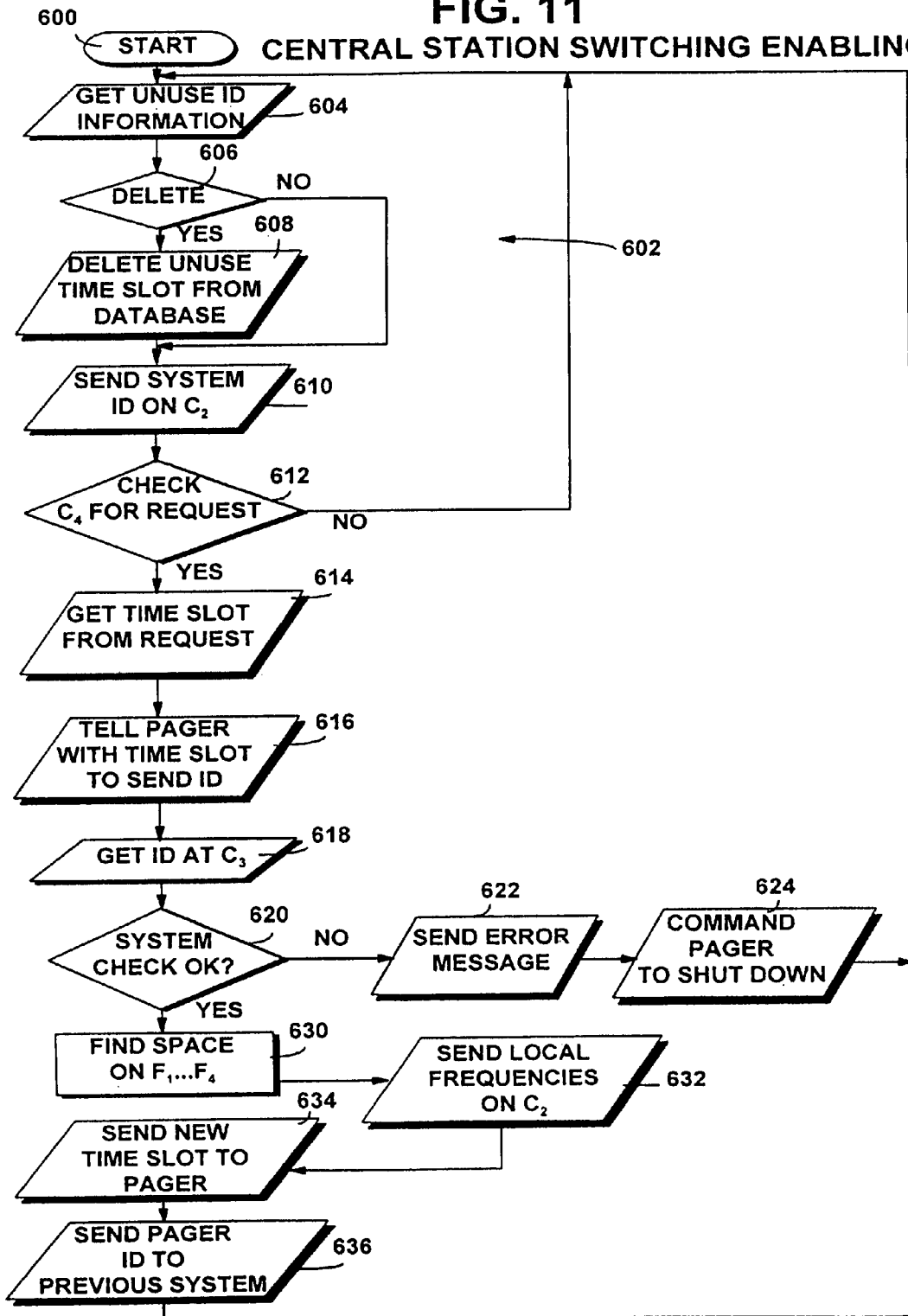


FIG. 12

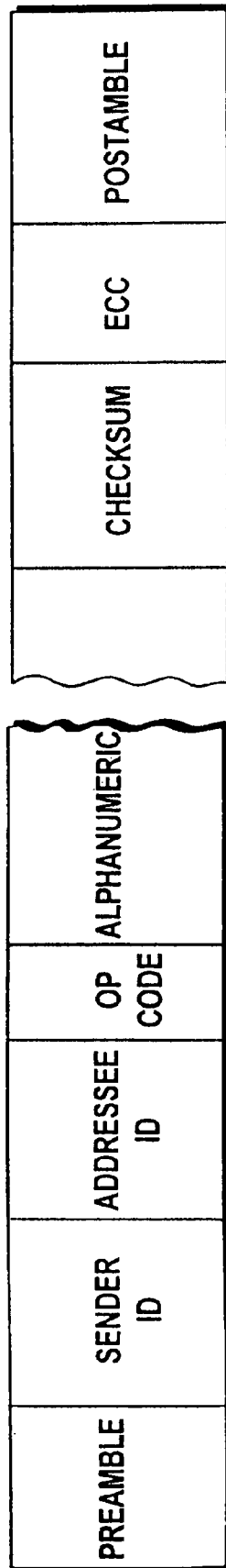
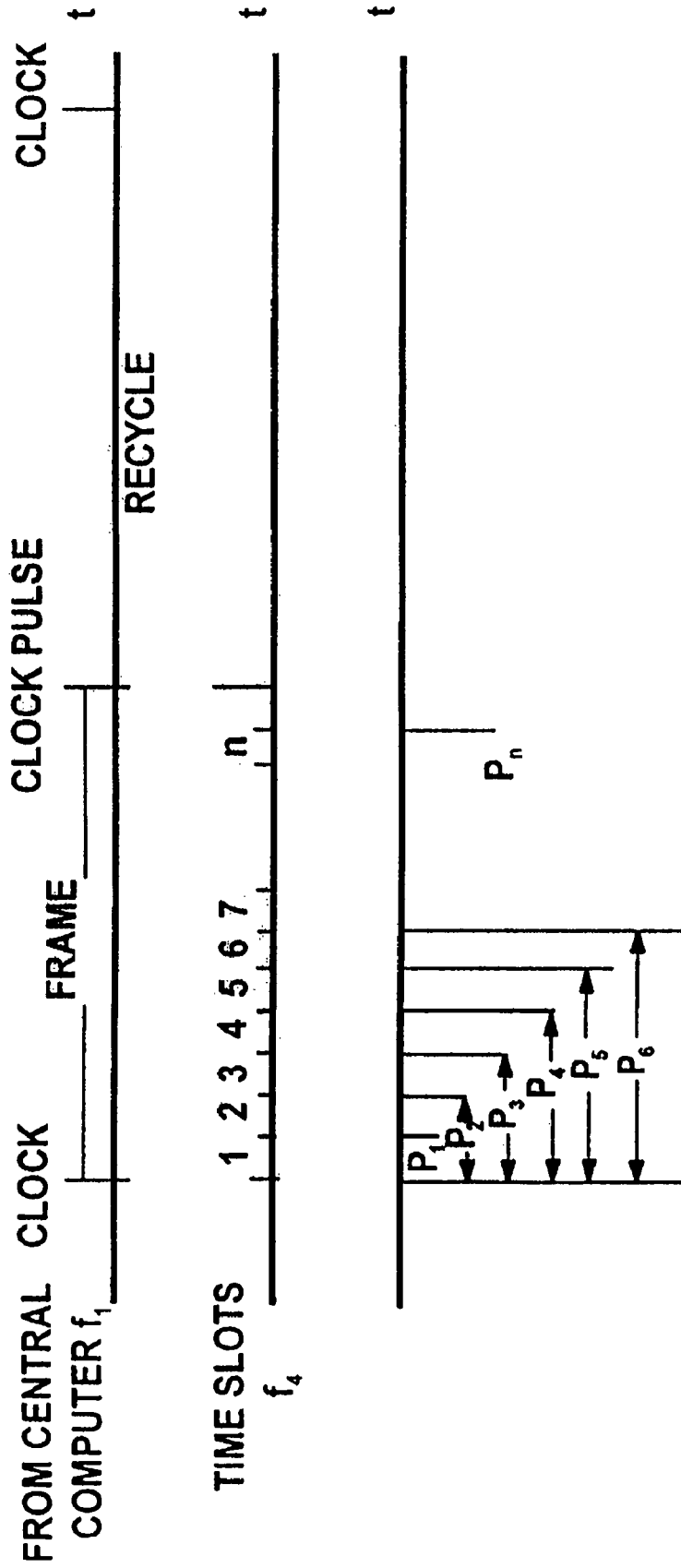


FIG. 13



# COMMUNICATION SYSTEM WITH REQUEST RESERVATION TIMESLOT MANAGEMENT

## CROSS REFERENCE TO RELATED APPLICATIONS

This application is a continuation of application Ser. No. 11/350,616 filed on Feb. 8, 2006, which is a continuation of application Ser. No. 09/847,005 filed on May 2, 2001, which is a continuation of application Ser. No. 09/594,662 filed on Jun. 15, 2000, now U.S. Pat. No. 6,282,406, which is a continuation of application Ser. No. 09/259,417, filed on Dec. 9, 1997, now U.S. Pat. No. 6,108,520, which is a continuation of application Ser. No. 08/608,629 filed on Feb. 29, 1996, now U.S. Pat. No. 5,729,827, which is a divisional of Ser. No. 08/264,973, filed Jun. 24, 1994, now U.S. Pat. No. 5,542,115, issued Jul. 30, 1996, entitled "PAGING METHOD AND APPARATUS", naming Wong, et al. as inventors, all of these applications being incorporated by reference herein in their entirety.

## BACKGROUND

### 1. Technical Field

This invention pertains to communications paging, and particularly to two-way paging method and apparatus.

### 2. Related Art

Over the last several decades, pagers have proven to be important communication devices for contacting remotely situated personnel. Whereas primitive pagers provided primarily only a tonal and/or vibratory output, more modern pagers have enhanced output capabilities such as message-bearing alphanumeric displays.

Paging systems have historically been one-way systems. That is, the user receives a paging message from a central terminal but has no way of responding to that message with the pager. Prior art attempts to provide two-way communication capabilities for a pager have included efforts to connect the pager to a telephone (e.g., to a mobile radio telephone). See, for example, U.S. Pat. No. RE 33,417 to Bhagat et al. (which combines an entire radio pager and radiotelephone linked through an automatic dialer) and U.S. Pat. No. 5,117,449 to Metroka, et. al. (which purports to combine paging and cellular radiotelephone functions in a single unit).

Some pagers have the capability of providing an acknowledgment or response to a paging signal. In some such "ack-back" systems, a user operates a reply input device (e.g., a toggle switch, pushbutton switch, or keyboard) when paged. Typically such ack-back systems involve a complex acknowledgement transmission scheme, involving numerous frequencies or frequency sub-bands. Hand-off of the pager, as the pager travels between differing geographic regions or "cells" served by differing central stations, becomes technically cumbersome when multitudinous frequencies are involved.

## SUMMARY

A two-way paging system utilizes four local frequencies for transmissions between pager units and a central control station. A first local frequency carries a local clock; a second local frequency carries communications packets from the central control station to paging units; a third local frequency carries communication packets from the pager units to the central control station; and a fourth local frequency carries a status or request signal from the paging units to the central

control station. Transmissions on the fourth local frequency are in accordance with a time divided slot allocation among pager units accessing the central control station.

For a two-way paging system having a plurality of central control stations servicing a corresponding plurality of cells, a total of eight frequencies are utilized within any one cell. Four of the utilized frequencies are the local frequencies, (which may differ from cell to cell), and four of the utilized frequencies are lower power common frequencies or switching frequencies which are used to switch or hand-off a pager unit traveling from one cell to another.

## BRIEF DESCRIPTION OF THE DRAWINGS

The foregoing and other objects, features, and advantages of the invention will be apparent from the following more particular description of preferred embodiments as illustrated in the accompanying drawings in which reference characters refer to the same parts throughout the various views. The drawings are not necessarily to scale, emphasis instead being placed upon illustrating the principles of the invention.

FIG. 1 is a schematic view of a central control station included in a paging system of an embodiment of the invention.

FIG. 2 is a schematic view of a pager unit included in a paging system for use with the central control station of FIG. 1.

FIG. 3 is a flowchart depicting steps executed by the central control station of FIG. 1.

FIG. 4 is a flowchart depicting steps executed by the pager unit of FIG. 2 when in a transmit mode.

FIG. 5 is a flowchart depicting steps executed by the pager unit of FIG. 2 when in a receive mode.

FIG. 6 is a timing diagram reflecting communications between the central control station of FIG. 1 and the pager unit of FIG. 2.

FIG. 7 is a schematic view of a central control station included in a paging system of a second embodiment of the invention.

FIG. 8 is a schematic view of a pager unit included in a paging system for use with the central control station of FIG. 7.

FIG. 9 is a hybrid schematic view and timing diagram for representing switching operations for the paging system of the second embodiment of the invention.

FIG. 10 is a flowchart depicting steps executed by the pager unit of FIG. 8 in connection with a channel switching operation.

FIG. 11 is a flowchart depicting steps executed by the central control station of FIG. 7 in connection with a channel switching operation.

FIG. 12 is a schematic view of a format of a communications packet utilized with embodiments of the invention.

FIG. 13 is a schematic view illustrating a time divided slot allocation technique according to the invention.

## DETAILED DESCRIPTION

FIG. 1 shows a central control station 20 according to a first embodiment of the invention; FIG. 2 shows a paging unit 22 suitable for use with central control station 20.

As shown in FIG. 1, central control station 20 includes central computer 30; transmitter 32; receiver 34; and computerized telephone answering system 36. Transmitter 32 transmits, via transmitting antenna 42, two local frequencies, namely frequency  $f_1$ , and frequency  $f_2$ . Receiver 34 is connected to receiver antenna 44 for reception of two local fre-



quencies, namely frequency  $f_3$  and frequency  $f_4$ . Computerized telephone answering system **36** is connected to a bank of telephones **48**.

Central computer **30** of central control station **20** comprises a conventional computer equipped with typical components including a CPU **50**; I/O interface **52**; and memory **54**. Although shown only generally in FIG. 1, it should be understood that memory **54** includes a number of unillustrated memory devices, including (for example) a hard disk drive, RAM, and ROM. FIG. 1 shows that memory **54** has stored therein (among other things) a pager registration file **55** and a pager directory file **56**. Pager files **55** and **56** are typically stored on a hard disk drive of central computer **30**, and upon start-up are loadable into a RAM portion of memory **54**.

Central computer **30** of central control station **20** further includes a decoder **57** (connected between receiver **34** and I/O interface **52** for decoding in-coming communications information from one or more pager units **22**), as well as encoder **58** (connected between I/O interface **52** and transmitter **32** for encoding out-going communications information).

Central control station **20** also includes a clock unit **59** which generates a local clock signal  $f_1\text{clk}$  (which, in turn, is used to modulate frequency  $f_1$ ).

As illustrated further herein, CPU **50** of central control station **20** prepares communications packets for transmission on frequency  $f_2$ . As generally illustrated in FIG. 12, the communications packets are of a predetermined format, having fields for identification of the central control station, for identification of the addressed pager unit(s) **22**, for an operation code, for (optionally) alphanumeric information, and for other conventional packet-type information such as checksum, error correction, and postamble. The preamble and postamble are specially chosen patterns which can be recognized and distinguished from data for the purpose of determining the beginning and ending of a packet. The alphanumeric information can be in a customary binary 8-bit format. The format of FIG. 12 is illustrative only, as such information as the order of the fields can be varied in other embodiments.

Central control station **20** communicates with a plurality of pager units  $22_1, 22_2, \dots, 22_N$ . Only one such pager unit, generically referenced as pager unit **22**, is specifically illustrated and described herein, it being understood that the construction and operation of other pager units may be similar to the one illustration.

As shown in FIG. 2, pager unit **22** includes a pager receiver antenna **60** which is connected to pager receiver **62**. Pager receiver **62** is, in turn, connected through S/D converter **64** within pager computer **70**. Receiver **62** receives the two local frequencies  $f_1$  and  $f_2$ , which frequencies have been modulated to carry in-coming communications information (described in more detail below) to pager computer **70**. On a communications output side, pager computer **70** outputs out-going communications information to pager transmitter **72** via D/S converter **74**. Transmitter **72** broadcasts, on pager antenna **76**, the out-going communications information on the two local frequencies  $f_3$  and  $f_4$ .

As also shown in FIG. 2, pager computer **70** includes pager microprocessor **80** which is connected to each of an arithmetic processor; a memory system **84** (including both ROM and RAM); and I/O interface **86**. I/O interface **86** is connected to a clock unit **87**. I/O interface **86** is also connected to receive in-coming decoded communications information from an 8-bit decoder **88** and to output out-going uncoded communications information to an 8-bit encoder **90**. Decoder **88** is connected to receive in-coming coded communications infor-

mation from S/D converter **64**; encoder **90** is connected to output out-going coded communications information to D/S converter **74**.

Clock unit **87** is settable by suitable inputs thereto so that clock unit **87** generates a local clock signal  $f_1\text{clk}$  having a frequency corresponding to its input. It should be understood that, in other embodiments, the function of clock unit **87** can be performed at least partially by microprocessor **80** using programmed execution.

I/O interface **86** is also connected to supply an on/off signal on line **92** to pager transmitter **72**, as well as to facilitate input and output with numerous input/output devices. The input/output devices connected to I/O interface **86** include keyboard **93**; beeper **94**; vibrator **95**; and LCD (alphanumeric) display **96**.

Upon manufacture, pager unit **22** is preprogrammed with an identification serial number (e.g., a 7-digit alphanumeric pre-assigned ID number) which is stored in memory **84** (ROM). Pager unit **22** is activated (e.g., at the time of purchase) by inserting a time slot assignment (explained below) both into a predetermined address in memory **84** of pager unit **22** and into pager directory file **56** (stored in memory **54** of central control station **20**).

#### Operation of First Embodiment

Communication between central control station **20** and pager unit **22** occurs on the four local frequencies, in particular the frequencies  $f_1, f_2, f_3$ , and  $f_4$  mentioned above. The first frequency ( $f_1$ ) carries the local clock-aligning signal from central control station **20** to paging unit **22**. The second frequency ( $f_2$ ) carries a pager command and alphanumeric data from central control station **20** to paging unit **22**. The third frequency ( $f_3$ ) carries pager status data and alphanumeric data from paging unit **22** to central control station **20**. The fourth frequency ( $f_4$ ) carries a pager request signal from paging unit **22** to central control station **20**. In the illustrated embodiment, the frequencies  $f_1$ - $f_4$  are preferably chosen so that  $f_1 \neq f_2 \neq f_3 \neq f_4$ .

As explained in more detail below and illustrated in FIG. 13, in normal non-cell-switching operation, the pager request signal on frequency  $f_4$  is transmitted in a predetermined time slot assigned to paging unit **22**. The predetermined time slot on frequency  $f_4$  is related to the clock-aligning signal (carried by frequency  $f_1$ ) and assigned whereby the fourth frequency is utilizable by a plurality of other paging units. For example, as shown in FIG. 13, a first time slot on frequency  $f_4$  is assigned to a pager P1; a second time slot is assigned to page P2, and so on up to time slot n assigned to pager Pn. In the illustrated embodiment, the number of time slots (and accordingly the number of pagers) may be as many as ten thousand or more.

FIG. 3 shows steps executed by CPU **50** of central control station **20** in processing communications to and from one or more paging units. The steps depicted in FIG. 3 are indicative of instructions stored in a ROM portion of memory **54** of central control station **20**.

When central control station **20** is started up (step **100**), an initialization process (step **102**) is conducted. Included in the initialization process is activation of transmitter **32** (so that transmitter **32** can transmit at the two frequencies  $f_1$  and  $f_2$ ) and activation of receiver **34** (so that receiver **34** can receive the two frequencies  $f_3$  and  $f_4$ ). Moreover, frequency  $f_1$  is modulated to carry the local clock-aligning signal generated by local clock **59**. Then, at step **104**, the pager registration file **55** and the pager directory file **56** are loaded from hard disk into a RAM section of memory **54** (step **104**).

After initialization and loading of the files **55** and **56**, CPU **50** repetitively executes an instruction loop **106**. Loop **106** involves checking to determine (at step **108**) whether a telephone message is being received (via answering system **36** from one of the telephones in bank **48**) and checking to determine (at step **110**) whether a pager message is being received (via transmitter **32** from one of the pager units **22**).

As used herein, a message, whether originated from a telephone or from a pager, may require a plurality of packets for transmission from a central station **20** to a pager **22** or vice versa. In the ensuing discussion, transmission and reception of messages subsumes transmission and reception one or more packets. In general, the packetization of messages will be invisible to the user, meaning that a user enters a message without regard to the number of packets which might be required to transmit the message. The message typically ends with a user-entered message termination character or message delimiter character. The transmitting device (either central station **20** or pager **22**), allocates the message to one or more packets having a format similar to that of FIG. **12**, with the last packet in the message bearing the message termination character. Alternatively, the packets may be formatted in a manner to indicate the number of consecutively related packets emanating from a transmitter (e.g., there may be a separate packet field indicating the continuation number of related packets).

Central computer **30** can distinguish between receipt of a telephone message (at step **108**) and a pager message (at step **110**) by virtue of the fact that I/O interface **52** generates different type of interrupts to CPU **50** depending on the type of message received. If it is determined at step **108** that a telephone message is being received, steps **112**, **114**, and **116** of FIG. **3** are executed.

In processing a received telephone message, at step **112** central computer **30** extracts out-going communications information from the predeterminedly sequenced telephone-entered data. The telephone-entered data, entered via a touchpad of a calling one of the telephones in bank **48**, includes by convention an identification (e.g., telephone number) of the calling telephone; an identification of the called pager unit (e.g., the 7-digit alphanumeric pre-assigned ID number); and any character data for transmission followed by a termination character. This out-going communications information is received at central computer **30** in standard DTMF format.

At step **114**, using the ID number of the called pager (obtained at step **112**) central computer **30** checks the pager registration file **55** and directory file **56** to determine whether the called pager unit is registered with central control station **20**. Assuming that the called pager is so registered, at step **114** the central computer **30** also obtains from pager directory file **56** the slot assignment for the called pager unit.

At step **116**, central control station **20** transmits communications information to the called pager unit. In this regard, central control station **20** prepares and transmits (on frequency  $f_2$ ) a communications message which includes, among other things, the ID of the called pager unit and the character data received from the telephone for transmission of the pager unit **22**. After step **116** is executed, processing returns to loop **106**.

If it is determined at step **110** that a pager message is being received, even numbered steps **132-140** of FIG. **3** are executed (prior to returning to loop **106**). As will be seen hereinafter with respect to FIG. **4**, a sending pager unit **22** transmits, in its assigned time slot, a request signal on frequency  $f_4$  when the sending pager unit **22** desires to send a message. As central control station **20** is always monitoring frequency  $f_4$ , a request signal carried by frequency  $f_4$  from any

pager unit **22** is noted. With reference to the local clock **59**, at step **132** CPU **50** determines in what time slot on frequency  $f_4$  the request signal is detected. Upon detection of the time slot at step **132**, at step **134** CPU **50** consults the pager directory file **56** to determine the identification number of the particular pager unit **22** which originated the request signal.

With the identity of the requesting pager unit **22** now known, at step **136** central control station **20** authorizes the requesting pager unit **22** to transmit its message. In particular, CPU **50** directs preparation of a communications message for transmission on frequency  $f_2$ . The particular communications packet prepared at step **136** includes an identification of the requesting pager unit (the addressee of the packet), as well as an operation code ("op" code) which commands/authorizes the requesting pager unit **22** to send its message.

At step **138**, central control station **20** receives a communications message on frequency  $f_3$  sent from the sending (e.g., requesting) pager unit **22**. The communications message prepared and sent by the sending pager unit **22** includes packets of similar format to that shown in FIG. **12**, and includes an identification of a pager to which the message is ultimately addressed as well as its own identification. At step **138**, CPU **50** checks to ensure that the ultimate addressee pager unit is registered in pager files **55** and **56**. At step **140**, CPU **50** makes any necessary reformatting and/or information substitution in the message, and causes the message to be transmitted on frequency  $f_2$ . The transmission on frequency  $f_2$  required by step **140** includes the identification of the ultimate addressee (e.g., a pager unit **22**) as well as an operation code indicating that the transmission includes a relayed message from another pager unit.

Steps executed by a pager unit **22** in connection with its transmission mode are depicted in FIG. **4**. Steps executed by a pager unit **22** in connection with its receive mode are depicted in FIG. **5**. The term "mode" as used herein does not connote exclusivity at any particular moment, for it should be remembered that at all times pager unit **22** is receiving transmissions on frequencies  $f_1$  and  $f_2$ .

In its transmission mode (see FIG. **4**), after start-up (step **200**) microprocessor **80** of the transmitting pager unit **22** executes a loop **202** wherein user alphanumeric characters (entered via keyboard **93**) are repetitively fetched (at step **204**) until an end of message delimiter is detected (at step **206**). As entered, the characters fetched at step **204** are displayed on LCD display **96**. Entry of the delimiter character at step **206** causes microprocessor **80** to exit loop **202**. By convention, the message must include an addressee ID, which addressee ID is likely the ID of another one of the pager units to which the message entered in step **204** is directed.

After entry of the message awaits entry from keyboard **93** of a transmit command at step **212**. Assuming that the transmit command is entered at step **212**, microprocessor **80** prepares and sends a request signal on frequency  $f_4$ . As indicated before, the request signal is transmitted on frequency  $f_4$  in a time slot assigned to the requesting pager unit **22**. It should be kept in mind that pager unit **22** is all the while receiving the local clock-aligning signal on frequency  $f_1$ , which enables microprocessor **80** to cause transmission of the request signal on frequency  $f_4$  at a time corresponding to the specific time slot allotted to the particular sending pager unit **22**.

In the above regard, in accordance with time division techniques, each pager unit  $22_1-22_N$  (e.g., pagers  $P_1-P_N$  in FIG. **13**) is assigned a selected one of N number of time slots on frequency  $f_4$ .

After transmission of the request signal at step **214**, pager unit **22** awaits receipt of a transmit command from central control station **20**. Preparation and transmission of the trans-

mit command/authorization from central control station 20 is described with reference to FIG. 3. Upon receipt of the transmit command/authorization from central control station 20 (step 216), microprocessor 80 prepares (at step 218) a communications message with one or more packets having a format much like that of FIG. 12. The addressee ID and alphanumeric field of packets of the communications message is filled with the message entered in loop 202. At step 220, the sending pager unit 22 broadcasts the communications packet on frequency  $f_3$ .

If a transmit command is not entered at step 212, or after transmission of the message at step 220, microprocessor 80 awaits entry of at least one of several possible special function keys at step 222. For example, the user may press a function key which requires storage of the message (whether yet transmitted or not) [see step 228]. Alternatively, the user may press function keys which facilitate editing or erasure of the message (see steps 224 and 226, respectively). To complete the message and begin work on another message, a special function key for an exit operation (step 230) must be pressed.

FIG. 5 depicts steps executed by microprocessor 80 of pager unit 22 when in a receive mode. After start-up (step 302), and as indicated by step 304, pager unit 22 receives transmissions from central control station 20 on frequency  $f_2$ . Once a complete packet is received (determined at step 306), a check is made (at step 308) whether the addressee ID in the communications packet (see packet format of FIG. 12) is the ID of the receiving pager unit 22. If the determinations of either step 306 or 308 are negative, pager unit 22 awaits either completion of the communications packet (in the case of step 306) or receipt of another communications packet (in the case of step 308) by looping back to step 304.

Assuming that the received communications packet is designated for this particular receiving pager unit 22, at step 310 microprocessor 80 consults the operation code field of the communications packet (see FIG. 12) to determine if the operation code indicates that the message includes a command. If the operation code indicates a command, a command processing routine (framed by broken lines 312 in FIG. 5) is executed.

Assuming for the moment that the operation code does not indicate a command, at step 314 microprocessor 80 of pager unit 22 stores the alphanumeric field portion of the communications packet (which at least partially forms the message) in a RAM portion of memory 84. Since a message communicated from central processing station 20 may require several communications packets for completion of the message (with subsequent communication packets providing continuations of the message content), microprocessor 80 checks at step 316 to ensure that the entire message has been received. If not, processing continues back at step 304 for reception of a further communications packet.

Upon reception of an entire communications message, at step 318 microprocessor 80 determines whether pager unit 22 is in a beep mode or a vibrate mode. In this regard, there are numerous ways of setting paging unit 22 to the desired mode, either by a specially dedicated switch on paging unit 22 or by data entry using keyboard 93. If pager unit 22 is in a beep mode, microprocessor 80 outputs a signal which causes I/O interface 86 to issue a further signal to activate beeper 94 (step 320). Alternatively, if pager unit 22 is in a vibrate mode, microprocessor 80 outputs a signal which causes I/O interface 86 to issue a further signal to activate vibrator 95 (step 322).

At step 324, microprocessor 80 directs I/O interface 86 to send the alphanumeric message data to LCD display 96, so that the received message can be viewed by the user.

After notification to the user (either via beeper 94 and/or vibrator 95), and display (on LCD 96) of the received alphanumeric data, microprocessor 80 returns to step 304 to check whether further communications packets are being received.

The command processing routine (framed by broken lines 312 in FIG. 5) first determines (step 330) which particular operation is being commanded. This determination is based on the content of the operation code, which is different for different command types. If the operation code indicates an error shut-down, execution jumps to an error shut-down sub-routine which begins at step 340. If the operation code indicates a time slot change, execution jumps to a change time slot sub-routine which begins at step 350. If the operation code requires transmitter shut-down, execution jumps to a transmitter shut-down sub-routine which begins at step 360. If the operation code requires transmitter re-enablement, execution jumps to a transmitter reenable sub-routine which begins at step 370. If the operation code requires clock re-set, execution jumps to a clock re-set sub routine which begins at step 380.

In connection with the error shut down sub-routine, at step 342 microprocessor 80 obtains an indication of error type from the communications packet. The error type is stored in memory 84 (step 344) and then displayed on LCD display 96 (step 346). Then microprocessor 80 issues a command (at step 348) to shut down pager unit 22, which shut-down occurs at step 349.

In connection with the time slot changing sub-routine, at step 352 microprocessor 80 extracts, from the received communications packet, information indicative of the new time slot assigned to the receiving pager unit 22. The new time slot is entered (at step 354) into memory 84 and thereafter utilized (until further change) in connection with transmission of request signals on frequency  $f_4$  (see, for example, step 214 of FIG. 4).

The time slot changing sub-routine may also include other operations, if desired, including (for example) eliminating unused time slots (thereby increasing scanning rate); diagnosing and trouble shooting; and avoiding interruption of service from malfunctioning or ill-functioning equipment.

In connection with the transmitter shut down sub-routine, at step 362 microprocessor 80 directs I/O interface 86 to issue an OFF command to transmitter 72. In connection with the transmitter re-enable sub-routine, at step 372 microprocessor 80 directs I/O interface 86 to issue an ON command to transmitter 72.

In connection with the clock re-set sub-routine, at step 382 microprocessor 80 directs that clock 59 of pager unit 22 be set.

After execution of steps 354, 362, 372, or 382, execution continues back to step 304 for processing of potential further communications packets. Thus, unless an error shut-down is noted, each entry of the command processing routine (framed by broken lines 312 in FIG. 5) is followed by a loop back to step 304.

FIG. 6 is a timing diagram showing the frequencies  $f_1$ - $f_4$  and integration of the steps depicted in FIGS. 3-5, particularly in the context of a request by a sending pager unit P1 for sending a message to a sendee pager unit P2. As employed in FIG. 6, "computer" refers to central control station 20. It should be understood that the sending pager unit P1 and the sendee pager unit P2 operate in both the transmission mode as depicted in FIG. 4 and in the receiver mode as depicted in FIG. 5. In general, FIG. 6 shows transmission of a message from pager unit P1 (via central control station 20) to pager unit P2; transmission of a confirmation message from pager unit P2 (via central control station 20) to pager unit P1; and transmission of a message from pager unit P1 to central

control station 20 indicating that pager unit P1 received the confirmation message from pager unit P2.

#### Structure of Second Embodiment

FIG. 7 shows a central control station 420 according to a second embodiment of the invention; FIG. 8 shows a paging unit 422 suitable for use with central control station 420.

FIG. 9 shows a wide area paging system including a plurality of central control stations S1-S8 (each identical to central control station 420), each preferably geographically centered within a respective cell. Each central control station S1-S8 broadcasts its own local frequencies, as well as a set of common or switching frequencies  $C_1$ - $C_4$ . The common frequencies  $C_1$ - $C_4$  are broadcast at a lower power, so that reception thereof occurs only in a relatively small neighborhood or common frequency reception region (CFRR) [also referred to as a "switching region"] about the central control station. The local frequencies are broadcast at a significantly greater power for reception substantially throughout the cell. For example, in FIG. 9, central control station S1 broadcasts its lower power common frequencies  $C_1$ - $C_4$  to CFRR<sub>1</sub> and its higher power local frequencies  $f_1$ - $f_4$  to CELL<sub>1</sub>; central control station S2 broadcasts its lower power common frequencies  $C_1$ - $C_4$  to CFRR<sub>2</sub> and its higher power local frequencies  $f_5$ - $f_8$  to CELL<sub>2</sub>.

As also shown in FIG. 9, CELL<sub>1</sub> and CELL<sub>2</sub> overlap in an overlap region shown in FIG. 9. Station S1 utilizes a set of local frequencies  $f_1$ - $f_4$ ; station S2 utilizes a different set of local frequencies  $f_5$ - $f_8$ . Both stations S1 and S2 utilize the same set of common or switching frequencies  $C_1$ - $C_4$ . Thus, each central control station utilizes two sets of frequencies, there being four frequencies in each set, resulting in a total of eight frequencies handled per station.

Thus, the second embodiment of the invention is suitable for a system having a plurality of central control stations 420<sub>x</sub> where  $x=1, 2, \dots, M$ . Each central control station 420<sub>x</sub> transmits and receives a set of local frequencies  $f_{L1}, f_{L2}, f_{L3}, f_{L4}$  in an associated geographical area or cell, as well as the set of common or switch frequencies  $C_1, C_2, C_3, C_4$ . While the values of the local frequencies  $f_{L1}, f_{L2}, f_{L3}, f_{L4}$  vary from cell to cell (e.g., differ for differing central control stations 420<sub>x</sub>), the values of the common or switch frequencies  $C_1, C_2, C_3, C_4$  are uniform through the system (e.g., for all central control stations 420<sub>x</sub>).

Although not shown in FIG. 9, it should be understood that the pattern of central control stations repeats in like manner in all compass directions in accordance with the prescribed geographical boundaries of the paging system. Moreover, although not specifically illustrated in FIG. 9, it should also be understood that each central control station 420 has an associated CFRR.

The common or switching frequencies  $C_1$ - $C_4$  have an analogous function to the corresponding local frequencies  $f_1$ - $f_4$ , respectively. In this regard, frequency  $C_1$  carries a clock frequency transmitted by central control station(s), although the clock rate on common frequency  $C_1$  preferably varies among central control stations. Frequency  $C_2$  is used to transmit information from central control station(s) to pager unit (s); frequency  $C_3$  is used to transmit information from a pager unit to a central control station; frequency  $C_4$  is used by pager units to issue a request signal. Frequency  $C_2$  carries packets having a format similar to that of FIG. 12. In analogous manner to frequency  $f_2$ , the packets carried by frequency  $C_2$  may have command codes. Among the  $C_2$  command codes are a SYSTEM COMMAND CODE; a LOCAL FREQUENCY DOWNLOAD COMMAND CODE; a SLOT

RECOGNITION COMMAND CODE; and a SLOT ASSIGNMENT COMMAND CODE.

As shown in FIG. 7, central control station 420 resembles central control station 20 of the embodiment of FIG. 1 (similar components being assigned the same reference numerals for simplicity). However, central control station 420 is augmented by inclusion of a further transmitter, known as common frequency transmitter 432, together with its common frequency transmission antenna 442, for transmitting the common frequencies  $C_1$  and  $C_2$ . In contrast to the high power transmitter 32, transmitter 432 is a low power transmitter. Further, central control station 420 is augmented by inclusion of a further receiver, known as the common frequency receiver 434, together with its common frequency receiver antenna 444, for reception of the common frequencies  $C_3$  and  $C_4$ .

Central control station 420 of FIG. 7 includes a clock unit 59' which generates two clocking signals—a first or local clocking signal  $f_L$ clk and a second or common clocking signal  $C_1$ clk. The local clocking signal  $f_L$ clk is used to modulate frequency  $f_1$ ; the common clocking signal is used to modulate the common frequency  $C_1$ .

The central computers 30 of the central control stations 420<sub>x</sub> are serially connected to one another by an output line 486A and an input line 486B. In particular, although not expressly shown as such in FIG. 7, computer 30 of FIG. 7 (like that of FIG. 1) includes an I/O interface to which the serial lines 486A and 486B are connected. Serial lines 486A and 486B are used, for example, to update contents of the pager registration file 55 and the pager directory file 56.

As shown in FIG. 8, pager unit 422 resembles pager unit 22 of the embodiment of FIG. 2 (similar components again being assigned the same reference numerals for simplicity). However, pager unit 422 (in like manner as central control station 420) is augmented by inclusion of a further transmitter, known as common frequency transmitter 572, together with its common frequency transmission antenna 576, for transmitting the common frequencies  $C_3$  and  $C_4$ . Further, central control station 420 is augmented by inclusion of a further receiver, known as the common frequency receiver 434, together with its common frequency receiver antenna 444, for reception of the common frequencies  $C_1$  and  $C_2$ .

The operational frequencies of transmitter 72 and receiver 62 are changeable in accordance with values transmitted on "frequency control" lines from computer 70. In particular, the frequency control lines are connected to I/O interface 86 in computer 70. As described in more detail below, when a pager unit 422 migrates into a new CFRR, signals are applied on the frequency control lines in order to switch pager unit 422 from the local frequencies of an old cell to the local frequencies of a new cell associated with the new CFRR into which pager unit 422 migrates.

Pager 422 includes a clock unit 83' which is capable of separately generating local clocking signals  $f_L$ clk and the common clocking signals  $f_{c1}$ clk for use by microprocessor 80. These clocking signals are initiated and their frequencies set by appropriate respective inputs to clock unit 83'.

FIG. 8 also shows that pager unit 422 has data I/O unit 596 which includes both an alphanumeric graphic display and a pressure sensitive writing pad. The alphanumeric graphic display is a dot matrix device which can display characters and graphics. The writing pad has a 16×48 dot area.

#### Operation of Second Embodiment

As shown in FIG. 9, a pager unit P1 is assumed to have been operating in CELL<sub>1</sub> and to have previously received the com-

mon frequencies  $C_1$ - $C_4$  and local frequencies  $f_1$ - $f_2$  from station S1. Now pager unit P1 travels on a route indicated by broken arrow-headed line ROUTE. In traveling along the ROUTE, pager unit P1 continues to operate on local frequencies  $f_1$ - $f_2$ , even as it travels through the cellular overlap region. However, when page unit P1 enters a new common frequency reception region (i.e., CFRR<sub>2</sub>), a switching or hand-off operation occurs. In the switching operation, as explained in more detail below, pager unit P1 obtains common frequencies  $C_1$ - $C_4$  from central control station S2 and, as a result, can switch from the local frequencies  $f_1$ - $f_4$  of CELL<sub>1</sub> to the local frequencies  $f_5$ - $f_8$  of CELL<sub>2</sub>. In order to effect the switching or hand-off operation, pager unit P1 executes a channel switching routine; the central control station S2 executes a switching enabling routine.

In connection with the channel switching routine and the switching enabling routine, when pager unit P1 moves into CFRR<sub>2</sub>, pager unit P1 will receive the clocking signal on frequency  $C_1$  from station S2. At such point, pager unit P1 will automatically align its clock unit with the clocking signal from station S2.

Referring now to the channel switching routine executed by pager P1 subsequent to start-up (step 500), at step 506 pager unit P1 obtains information characterizing the system centered about station S2. Such characterizing information is referred to as system identification or system ID information.

At step 508, microprocessor 80 of pager unit P1 checks to determine if there is any new system ID information acquired on frequency  $C_2$ . That is, microprocessor 80 checks to determine if system ID information is received on frequency  $C_2$  (which can occur only in a CFRR) and, if so, compares the system ID information to the immediately previously-stored system ID information. If the previous and most recently-acquired system IDs are the same, pager unit P1 realizes that it is still in the jurisdiction of the same station (e.g., station S1). If not, pager unit P1 realizes that it has now wandered into a CFRR of a new station (e.g., station S2) and, at step 510, initiates a request on frequency  $C_4$  for communication with the central control station (e.g., station S2) for CELL<sub>2</sub>.

In the above regard, since pager unit P1 has not yet been assigned a time slot for CELL<sub>2</sub>, the request on frequency  $C_4$  is randomly made. However, pager unit P1 keeps track of the time slot in which it makes its request to the new central control station (e.g., station S2).

Thereafter, pager unit P1 continues to monitor (step 512) communications packets from station S2 on frequency  $C_2$ , waiting for station S2 to issue a message which references the time slot at which pager unit P1 made its request of step 510. In particular, page unit P1 awaits a message from station S2 on frequency  $C_2$  that includes both a SLOT RECOGNITION COMMAND CODE and information stored in the same time slot which pager unit P1 randomly generated. Since the message including the SLOT RECOGNITION COMMAND CODE includes station S2 as the sender and mirrors the slot randomly generated by pager unit P1, pager unit P1 recognizes the message as being addressed to pager unit P1 and considers issuance of such a message by station S2 (see step 612 of FIG. 11) to constitute authority for pager unit P1 to communicate further with station S2. In this regard, at step 514 microprocessor 80 of pager unit P1 determines if there is a match between the time slot of a received message and the time slot at which the random request was made at step 510.

Assuming a match is eventually found at step 514, at step 516 pager unit P1 sends a communications packet on frequency  $C_3$  to station S2, with the communications packet including the identification or ID of pager unit P1. Using pager registration file 55, station S2 verifies that the ID of

pager unit P1 is a valid ID, and thereafter sends (on frequency  $C_2$ ) to pager unit P1 a message with the command code LOCAL FREQUENCY DOWNLOAD, which message informs pager unit P1 of the values of the local frequencies handled by station S2 (e.g., frequencies  $f_5$ - $f_8$ ). Thereafter, as also reflected by step 518, station S2 sends (on frequency  $C_2$ ) to pager unit P1 a message with the command code SLOT ASSIGNMENT COMMAND CODE, which message informs pager unit P1 of its slot assignment on frequency  $f_8$ . Microprocessor 80 then changes its slot allocation by steps which are similar to those discussed with the afore-mentioned change time slot routine (see steps 350, 352, and 354 of FIG. 5). Step 518 of FIG. 10 reflects reception of the local frequency values and reception of the slot assignment.

After acquisition of all local frequencies and the slot assignment is completed (step 520), microprocessor 80 implements (at step 522) a switch to the new local frequencies (e.g., frequencies  $f_5$ - $f_8$ ). In this regard, microprocessor 80 instructs I/O interface 86 to change transmitter 72 from frequencies  $f_3$ ,  $f_4$  to frequencies  $f_7$ ,  $f_8$ ; and to change receiver 62 from frequencies  $f_1$ ,  $f_2$  to frequencies  $f_5$ ,  $f_6$ . I/O interface 86 accomplishes the frequency changes by applying appropriate values on the frequency control lines connecting the I/O interface to transmitter 72 and receiver 62, respectively.

After the switch to new local frequencies at step 522, microprocessor 80 loops back to step 506, ultimately to determine when any further switching may be required.

Steps involved in the switching enabling routine executed by a central control station (e.g., station S2) are depicted in FIG. 11. After start-up (step 600), CPU 50 determines executes a loop 602 which enables CPU 50 to clean up its pager directory file 56 and to check if any new pager units have wandered into the cell which it administers.

In particular, at step 604 CPU 50 determines whether its central control station (e.g., S2) has been advised by any other central control station (e.g., S3) that a pager unit, formerly under the control of its central control station (e.g., S2), has come under the control of the other central control station (e.g., S3). Such advisement occurs on the serial links connecting the central control stations 420<sub>x</sub>, and particularly input serial link 486B. If such advisement occurs, the ID for the wandered-away pager is deleted from the pager directory file 56 for station S2 (as reflected by steps 606 and 608).

At step 610, CPU 50 causes messages with a SYSTEM COMMAND CODE to be transmitted on frequency  $C_2$ . As indicated before, messages transmitted on frequency  $C_2$  include a packet(s) having a format such as that shown in FIG. 12. The message with the SYSTEM COMMAND CODE particularly includes the central station ID number in its alphanumeric data field.

At step 612, central control station 420 checks to determine if a request signal has been transmitted by any pager unit 422 on frequency  $C_4$  (as occurred, for example, in context of the discussion of FIG. 10, particularly step 510). Such a request signal would likely be issued from a pager unit 422 which has just wandered into the CFRR controlled by the central control station (e.g., into CFRR<sub>2</sub> controlled by station S2). If no such request signal is detected, loop 602 is again repeated.

In the event that a request signal is detected at step 612, central control station 420 notes specifically the time slot on frequency  $C_4$  at which the request occurred (step 614). At this point, such time slot is the only way central control station 420 can identify the in-wandering pager unit 422. Central control station 420 desires for the in-wandering pager unit 422 to transmit its identification (ID), but cannot specifically address the in-wandering pager other than with reference to the detected time slot. Accordingly, at step 616, central con-

trol station 420 prepares and transmits a message on frequency  $C_2$  which has a SLOT RECOGNITION COMMAND CODE. The message including the SLOT RECOGNITION COMMAND CODE includes station S2 as the sender and mirrors the slot randomly generated by pager unit P1 (e.g., the time slot at which the in-wandering pager unit 422 issued its request). This transmission on frequency  $C_2$  constitutes authority for pager unit P1 to transmit its identification.

Step 618 denotes acquisition by central control station 420 of the identification (ID) of the in-wandering pager unit 422. At step 620, central control station 420 checks its pager registration file 55 to determine if the pager ID is a valid ID. If not, an error message is generated and transmitted (at step 622), followed by a command for pager unit P1 to shut down (see step 624).

Assuming that the identification of pager unit 422 was validated at step 620, CPU 50 checks (at step 630) its pager directory file 56 to locate an available time slot for the in-wandering pager unit 422, and then associates the available time slot with the ID of the in-wandering pager unit 422. Then, at step 632, using a message on frequency  $C_2$  with a LOCAL FREQUENCY DOWNLOAD COMMAND CODE, central control station 420 sends the values of its local frequencies (e.g.,  $f_5, f_6, f_7, f_8$ ) to the in-wandering pager unit 422. The central control station then (at step 634) assigns to the in-wandering pager unit 422 a new time slot on its local frequencies using a message on frequency  $C_2$  with a SLOT ASSIGNMENT COMMAND CODE. Processing of the change time slot command by the in-wandering pager unit 422 is understood with analogous reference to FIG. 5, particularly steps 350, 352, and 354.

Upon completion of step 634, the in-wandering pager unit 422 is fully initiated into its new cell (e.g.,  $CELL_2$ ), and has left the jurisdiction of its former control station (e.g.,  $CELL_1$  and station S1). Accordingly, at step 636, CPU 50 requests its I/O interface to issue a command on serial line 486A which advises (using pager ID) that the in-wandering pager 422 is now under its jurisdiction, so that former jurisdictions (e.g., S1) can delete this pager unit from their pager directory files 56. Such deletion is understood with reference to steps 604-608 as above-described.

In addition to illustrating geographical location of pager P1, stations S1 and S2, and cells  $CELL_1$  and  $CELL_2$ , FIG. 9 shows the relative timing of communications occurring on common frequencies  $C_1$ - $C_4$ . FIG. 9 specifically relates the timing of communications transmissions to specific ones of the afordescribed steps executed by central control station 420 (the switching enabling routine of FIG. 11) and by pager unit 422 (the channel switching routine of FIG. 10).

Although the central control stations  $420_x$  use the same common frequencies  $C_1$ - $C_4$ , there is no interference or confusion of these signals transmitted from the control stations  $420_x$ . The common frequencies  $C_1$ - $C_4$  are broadcast at a relatively lower power than the local frequencies  $f_1$ - $f_4$  so that reception of the common frequencies  $C_1$ - $C_4$  occurs only in a limited neighborhood (CFRR) about the central control station  $420_x$ . Accordingly, pager units 422 traveling through the system receive common frequencies  $C_1$ - $C_4$  only in the limited and non-overlapping CFRRs.

System operational characteristics, such as cell diameter, CFRR diameter, power level of the local frequencies (e.g.,  $f_1$ - $f_4$ ), and power level of the common frequencies ( $C_1$ - $C_4$ ) can be field adjusted to suit numerous factors, including particularly the terrain and topography of the geographical region covered by the system. By way of non-limiting example, in one embodiment, the radius of each cell is on the order of about 20 miles; while the radius of each CFRR is on

the order of about 10 miles or less. In the same example, the power for transmission of the local frequencies can be in a range of from about 3 watts to 1000 watts; while the power for transmission of the common frequencies  $C_1$ - $C_4$  is preferably less than 2 watts.

Thus, the invention provides a two-way paging system which operates independently from a telephone system for wireless data communication between users. The invention minimizes use of available frequencies allowed by the Federal Communications Commission (FCC), using only four local frequencies  $f_1$ - $f_4$  for any given cell and (for expanded, multi-cellular coverage) only four common or switching frequencies  $C_1$ - $C_4$ . In order to minimize the number of frequencies (e.g., channels) utilized, techniques of time division sharing and synchronization are employed. A transmission power differential between the local frequencies and the common frequencies is also employed. These techniques allow data transmission to be kept separate from different pagers and thus eliminates merging of data.

The switching technique of the present invention provides extended geographical coverage and minimizes paging time by increasing the number of frequencies utilized in a cell from four (e.g., the four local frequencies) to eight (the four local frequencies plus the four common frequencies).

In connection with verification of pager ID, it should be understood that a single pager registration file might be stored in a memory file only one of a plurality of central control stations, and that in such case verification would constitute issuing a search command (on the serial links 486) to locate a pager ID in the one (remote) memory file, with the results of the search being reported back to the inquiring central control station.

The keyboards illustrated herein can, in some embodiments, be multi-language keyboards or writing pads which permit typing of English, Chinese, or Japanese languages, for example. The writing pad is especially useful in countries such as Japan, Thailand, the middle East or China where English-like alphabets are not used. The writing pad could also be used to sketch and transmit graphics. Moreover, data compression/de-compression techniques can be utilized in connection with data transfer.

While the invention has been particularly shown and described with reference to the preferred embodiments thereof, it will be understood by those skilled in the art that various alterations in form and detail may be made therein without departing from the spirit and scope of the invention. For example, it should be understood that repeaters may be employed within cells to facilitate transmission when a pager unit ventures far from a central control station.

What is claimed:

1. A method of communicating between at least one communication controller and a plurality of network nodes, the method comprising:

monitoring use of reserve request slots assigned to the nodes to transmit requests to transmit data packets to the communication controller;

determining if any of the reserve request slots are unused; and

eliminating assignment of the reserve request slots which are determined to be unused,

wherein requests provided in the reserve request slots and other signals transmitted between the network nodes and the communication controller are provided on at least two different frequencies,

wherein the requests include a first request provided from a first node in a reserve access request slot, and

wherein the other signals comprise:

15

a grant transmitted to the first node in response to the first request from the first node, the grant authorizing the first node to transmit data packets to the communication controller.

2. The method of claim 1, wherein the reserve request slots assigned to the nodes for the reserve requests are different than slots assigned for the transmission of data packets to the communication controller.

3. The method of claim 1, wherein the unused reserve request slots comprise request slots assigned to given ones of the nodes which have not transmitted reserve request signals for a predetermined period of time.

4. The method of claim 1, wherein the elimination step comprises:

reassigning the reserve request slots so that given ones of the nodes that have reserve request slots are reassigned to sequentially available slots; and

eliminating slots after the sequentially available slots.

5. The method of claim 1, wherein the unused reserve request slots comprise ones of the reserve request slots assigned to given ones of the nodes that have moved outside range of the communications controller.

6. The method of claim 1, wherein a respective one of the reserve request slots is available repeatedly for a respective one of the nodes until the communication controller eliminates the assignment of the respective reserve request slot to the respective node.

7. The method of claim 6, wherein in addition to receiving the request in the respective one of the reserve request slots assigned to the respective node, the communication controller also receives information from the respective node relating to a number of the data packets being consecutively transmitted by the respective node.

8. The method of claim 6, wherein the plurality of network node comprise a first node and a second node;

wherein the second node is assigned a second one of the respective reserve request slots;

wherein the communication controller receives a reserve access request signal from the second node in the second one of the respective reserve request slots assigned to the second node during reception of respective ones of the data packets from the first node.

9. The method of claim 8, wherein said reserve access request signal received from the second node is received on a differing frequency than the respective data packets received from the first node.

10. The method of claim 8, wherein at least one of the respective data packets received from the first node comprise information related to a sequence number of the respective data packets, wherein a final data packet from the data packets further comprises terminal indication information indicating that the final data packet is a last data packet received of the respective data packets.

11. The method of claim 10,

wherein the communication controller receives a request to transmit the respective data packets from the first node on a first frequency, said request to transmit the respective data packets being received in the respective reserve request slot assigned to the first node;

wherein subsequent to receiving the request to transmit the data packets from the first node, the communication controller transmits a grant signal which allocates additional resources for the first node to transmit the data packets, said grant signal being transmitted from the communication controller on a second frequency which differs from the first frequency; and

16

wherein the communication controller received the data packets from the first node on a third frequency which differs from the first frequency and the second frequency.

12. The method of claim 10, wherein the communication controller transmits information related to the availability of at least one random access request slot opportunity wherein the plurality of nodes including the first node may transmit a random access request, wherein said availability of the at least one random access request slot opportunity is available to the respective node while said respective reserve request slot assigned to the respective node is made available for use only by the respective node.

13. The method of claim 12,

wherein the communication controller receives a requests to transmit the data packets from the first node in the plurality of nodes on a first frequency, said request to transmit data packets being received in the respective reserve request slot assigned to the first node;

wherein subsequent to receiving the request to transmit the data packets from the first node, the communication controller transmits a grant signal which allocates additional resources for the first node to transmit the data packets, said grant signal being transmitted from the communication controller on a second frequency which differs from the first frequency; and

wherein the communication controller received the data packets from the first node on a third frequency which differs from the first frequency and the second frequency.

14. The method of claim 1,

wherein a first node in the plurality of network nodes is assigned a given one of the reserve request slots;

wherein the first node transmits a request in the reserve request slot assigned to the first node;

wherein further information is received from the first node relating to a number of related ones of the data packets being transmitted as a message, the number providing information related to a sequence number of the related packets for the communication controller to determine when the data packets being transmitted are completely received, and

wherein a final data packet from the related data packets contains terminal indication information indicating that termination of the message has occurred.

15. The method of claim 14, wherein the communication controller transmits information related to the availability of at least one random access request slot opportunity wherein the plurality of nodes including the first node may transmit a random access request, wherein said availability of the at least one random access request slot opportunity is available to the first node while said respective reserve request slot assigned to the first node is made available for use by the first node.

16. The method of claim 14, wherein in addition to receiving the request in the given reserve request slots assigned to the first node, the communication controller also receives information from the first node relating to a number of the data packets being transmitted by the first node.

17. The method of claim 16, wherein the data packets are received in a different slot than the respective reserve request slot.

18. The method of claim 14,

wherein the plurality of network node comprise the first node and a second node;

wherein the second node is assigned a respective one of the reserve request slots;

17

wherein the communication controller receives a reserve access request signal in the respective reserve request slot assigned to the second node during reception of the related data packets from the first node.

19. The method of claim 18, wherein said reserve access request signal received from the second node is received on a differing frequency than the data packets received from the first node.

20. The method of claim 18,

wherein the communication controller receives a requests to transmit the data packets from the first node on a first frequency, said request to transmit the data packets being received in the respective reserve request slot assigned to the first node;

wherein subsequent to receiving the request to transmit the data packets from the first node, the communication controller transmits a grant signal which allocates additional resources for the first node to transmit data packets, said grant signal being transmitted from the communication controller on a second frequency which differs from the first frequency; and

wherein the communication controller received the data packets from the first node on a third frequency which differs from the first frequency and the second frequency.

21. The method of claim 1,

wherein the reserve request slots are available repeatedly for respective nodes including the first node until the communication controller eliminates assignment of a particular request slot for use by a particular node,

wherein the requests are received in a different location than the data packets transmitted from nodes;

wherein one of the requests is received from a first node in the plurality of network nodes and another of the requests is received from a second one of the nodes in the plurality of network nodes, and wherein the request from the second node can be received during reception of data packets from the first node.

22. The method of claim 21, wherein the communication controller transmits information related to the availability of at least one random access request slot opportunity wherein the plurality of nodes including the first node may transmit a random access request, wherein said availability of the at least one random access request slot opportunity is available to the first node while said reserve request slot assigned to respective nodes including the first node is made available.

23. The method of claim 21, wherein in addition to receiving the request in a respective one of the reserve request slot assigned to the respective node, the communication controller also receives information from the respective node relating to a number of the data packets being transmitted by the respective node.

24. The method of claim 23, wherein the data packets are received in a different slot than the respective reserve request slot.

25. The method of claim 21,

wherein the plurality of network node comprise the first node and a second node;

wherein the second node is assigned a respective one of the reserve request slots;

wherein the communication controller receives a reserve access request signal in the respective reserve request slot assigned to the second node during reception of the data packets from the first node.

18

26. The method of claim 25, wherein said reserve access request signal received from the second node is received on a differing frequency than the data packets received from the first node.

27. The method of claim 25, wherein at least one of related ones of the data packets received from the first node comprise information related to a sequence number of the related data packets, wherein a final data packet from the data packets further comprise terminal indication information indicating that the final data packet is the last data packet of the related data packets.

28. The method of claim 27,

wherein the communication controller receives a requests to transmit the data packets from the first node on a first frequency, said request to transmit data packets being received in the respective reserve request slot assigned to the first node;

wherein subsequent to receiving the request to transmit the data packets from the first node, the communication controller transmits a grant signal which allocates additional resources for the first node to transmit the data packets, said grant signal being transmitted from the communication controller on a second frequency which differs from the first frequency; and

wherein the communication controller received the data packets from the first node on a third frequency which differs from the first frequency and the second frequency.

29. The method of claim 1, wherein the data packets include representations of alphanumeric characters.

30. The method of claim 1, wherein the other signals further comprise:

a clocking signal that is transmitted to the nodes from the controller to enable synchronization.

31. The method of claim 1, wherein the other signals further comprise:

downstream authorization information transmitted from the communication to the first node in response to a slot assignment request from the first node, said downstream authorization information relating to assignment of one of the reserve request slots wherein the first node can transmit the first request.

32. A method of communicating between at least one communication controller and a plurality of network nodes, the method comprising:

monitoring use of reserve request slots assigned to the nodes to transmit requests to transmit data packets to the communication controller;

determining if any of the reserve request slots are unused; and

eliminating assignment of the reserve request slots which are determined to be unused,

wherein reserve requests provided in the reserve request slots and other signals transmitted between the network nodes and the communication controller are provided on different frequencies,

wherein the requests are transmitted in the reserve request slots by the nodes on a first frequency, and wherein the other signals comprise:

data signals carrying the data packets transmitted by the nodes when the reserve requests have been granted, the data signals being transmitted on a second frequency different than the first frequency, assignment signals carrying assignments of the reserve request slots that are transmitted to the nodes from the controller on a third frequency different from the first frequency and the second frequency, and



19

grant signals transmitted to the nodes from the controller in response to the requests, wherein the grant signals are provided on a fourth frequency different from the first frequency, the second frequency and the third frequency.

33. The method of claim 32, wherein the other signals further comprise a clocking signal that is transmitted to the nodes from the controller on a fifth frequency different from the first, second, third and fourth frequencies.

34. The method of claim 32, wherein a respective one of the reserve request slots is available repeatedly for a given one of the nodes until the communication controller eliminates the assignment of the respective reserve request slot to the given node.

35. A method of communicating between at least one communication controller and a plurality of network nodes, the method comprising:

monitoring use of reserve request slots assigned to the nodes to transmit requests to transmit data packets to the communication controller;

determining if any of the reserve request slots are unused; and

eliminating assignment of the reserve request slots which are determined to be unused,

wherein requests provided in the reserve request slots and other signals transmitted between the network nodes and the communication controller are provided on different frequencies,

wherein the requests are transmitted in the reserve request slots by the nodes on a first frequency, the requests including a first request from a first one of the nodes, and wherein the other signals comprise:

a slot assignment request signal provided to the controller for a slot assignment from a second node on a second frequency when the second node is seeking initial access to the controller, wherein the first request to transmit data packets can be received at the controller from the first node simultaneously with the slot assignment request from the second node, and wherein the second frequency is different from the first frequency; and

an assignment signal for transmitting a slot assignment from the controller to the second node on a third frequency; and

a grant signal transmitting a grant from the controller to the first node in response to the first request to transmit data packets from the first node, wherein the grant signal is transmitted on a fourth frequency different from the third frequency, and wherein the slot assignment to the second node and the grant signal to the first node can be transmitted simultaneously from the controller.

36. The method of claim 35, wherein a respective one of the reserve request slots is available repeatedly for a given one of the nodes until the communication controller eliminates the assignment of the respective reserve request slot to the given node.

37. The method of communicating between at least one communication controller and a plurality of network nodes, the method comprising:

20

monitoring use of reserve request slots assigned to the nodes to transmit requests to transmit data packets to the communication controller;

determining if any of the reserve request slots are unused; and

eliminating assignment of the reserve request slots which are determined to be unused,

wherein requests provided in the reserve request slots and other signals transmitted between the network nodes and the communication controller are provided on at least two different frequencies,

wherein the requests include a first request provided from a first node in a reserve access request slot, and

wherein the other signals comprise:

a slot assignment request from a first node, the slot assignment request provided in a random access slot; downstream authorization information transmitted from the communication to the first node in response to the slot assignment request, said downstream authorization information relating to assignment of one of the reserve request slots wherein the first node can transmit the first request;

a grant transmitted to the first node in response to the first request from the first node, the grant authorizing the first node to transmit data packets to the communication controller; and

the data packets received from the first node.

38. The method of claim 37,

wherein the slot assignment request received from a first node includes randomly generated information created by the first node,

wherein the downstream authorization information returns said randomly generated information to the first node to enable identification of the first node as a desired recipient of the downstream authorization information, and wherein the reserve access request slot is assigned to the first node by the controller independent of the randomly generated information.

39. The method of claim 6,

wherein prior to assignment of the respective one of the reserve request slots to the respective node said respective node must communicate with the communication controller over at least one random request slot;

wherein the communication controller receives randomly generated information in a random request slot from the respective node;

wherein the communication controller in response to receiving said randomly generated information from the respective node returns said randomly generated information to the respective node which transmitted said randomly generated information along with the random request slot wherein the randomly generated information was transmitted.

40. The method of claim 37, wherein a respective one of the reserve request slots is available repeatedly for a given one of the nodes until the communication controller eliminates the assignment of the respective reserve request slot to the given node.

\* \* \* \* \*